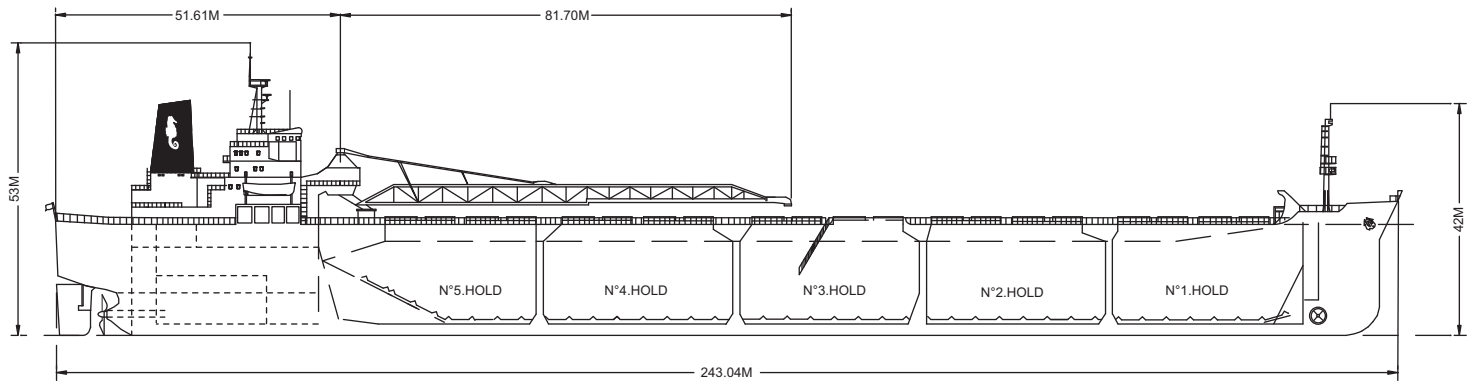
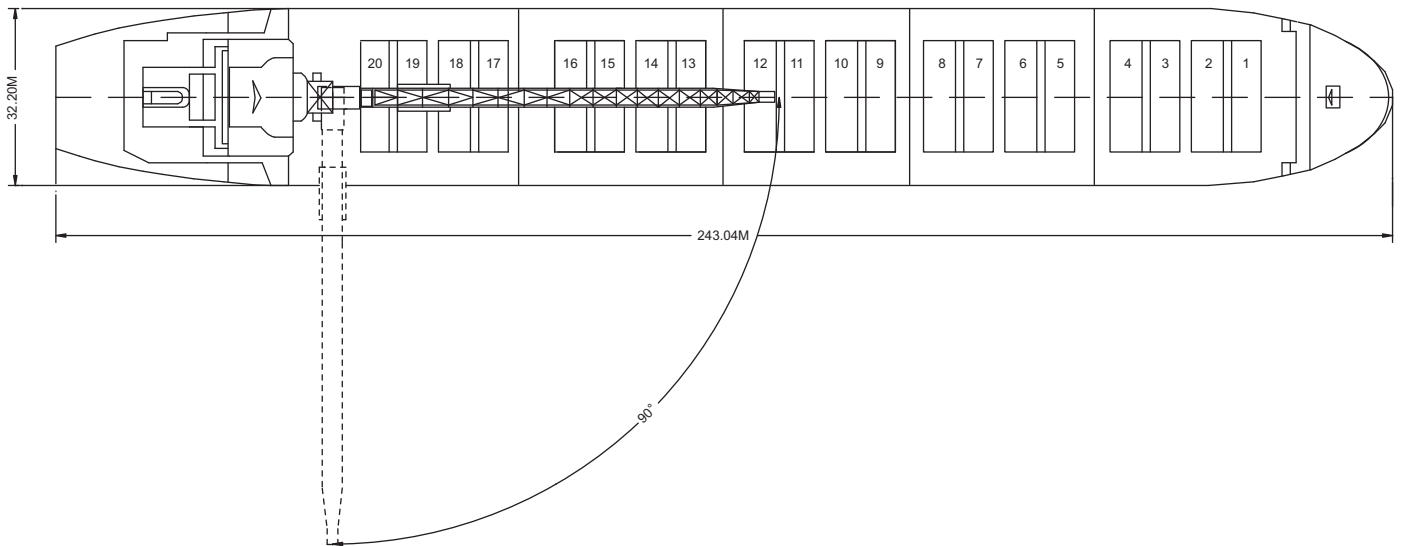
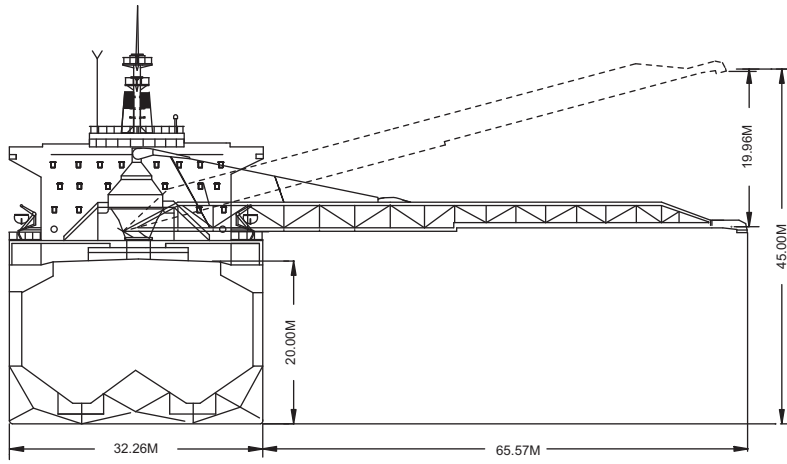




The Nelvana unloading coal into a hopper on the Mississippi River.

Built	1983
Classification	Lloyds +100 A1
Length Overall	243.04 metres
Breadth Moulded	32.26 metres
Depth Moulded	20.00 metres
Total Hold Capacity (including hatches)	75,457.60 cubic metres
Deadweight	74,974 tonnes
Draft	13.92 metres
Gross Tonnage	44,340 tonnes
Net Tonnage	19,671 tonnes
Bow Thruster	1200 BHP
Length of Boom	81.70 metres
Discharge Rate	-Coal	2,500 tonnes/hr
	-Ore	5,000 tonnes/hr



0981-04 12/03/04

Air Drafts (metres)												
Draft Condition	Stem	Foremast	Hatches			Cargo Gear	Main Mast		Funnel	Stern	Other Obstruction	Maximum
			Forward	Midship	Aft		Deployed	Lowered				
Keel	21.50	42.00	26.20	21.00	21.00	31.95	53.00	49.90	43.50	24.90	N/A	53.00
Light Ship	16.36	41.47	25.47	15.86	15.86	27.25	46.76	44.76	38.36	24.17	N/A	46.76
Normal Ballast 50% Bunker	13.09	33.80	34.60	12.60	12.60	23.55	43.50	41.50	35.10	16.50	N/A	43.50
Fully Loaded 50% Bunker	7.66	28.36	12.36	7.16	7.16	18.11	38.06	36.06	29.66	11.06	N/A	38.06

Hatch and Hold Specifications									
Hold Number	1	2	3	4	5	6	7	TOTAL	
Hold Volumes (cubic metres)									
Cubic	14,444.4	14,792.8	14,732.2	15,976.9	13,020.7				72,967.0
Maximum Grain	14,925.8	15,295.1	15,234.5	16,479.2	13,523.0				75,457.6
Grain in way of Hatch	481.4	502.3	502.3	502.3	502.3				2,490.6
Hold Openings (metres)									
Number of Openings	3	4	4	4	4				20
Opening Length	5.78	5.78	5.78	5.78	5.78				
Opening Width	19.76	19.76	19.76	19.76	19.76				
Coaming Height above Keel	20.60	20.60	20.60	20.60	20.60				
Hatch Information (metres)									
Description	Steel Water Tight	Steel Water Tight	Steel Water Tight	Steel Water Tight	Steel Water Tight				
Operation	Gantry Lift	Gantry Lift	Gantry Lift	Gantry Lift	Gantry Lift				
Hatch Length	5.82	5.82	5.82	5.82	5.82				
Hatch Width	21.60	21.60	21.60	21.60	21.60				
Hatch Top Height above Keel	21.49	21.49	21.49	21.49	21.49				

Cargo Handling Equipment
• Double belt gravity system with loop belt elevator.
• 82m discharge boom luffing to 18 deg. and slewing to 100 deg. P & S.
• Hold hoppers are covered with ultra high molecular weight polyethylene.
• Designed discharge rate of up to 5,000 tonnes / hour
• Dust Suppression: Water Spray
• Unloader Boom Length: 81.70 metres
• Discharge Rate - Coal: 2,500 tonnes/hr - Ore: 5,000 tonnes/hr
• Maximum Boom Outreach: 65.57 metres

Consumption (tonnes per day)				
	Speed		Main Engine	Generators
	Loaded	Ballast	IFO	MDO
Sea	14.5 knots	15.2 knots	49.5	3.8
Port / Anchorage			0	4.4
Loading / Discharge			0	12.2

