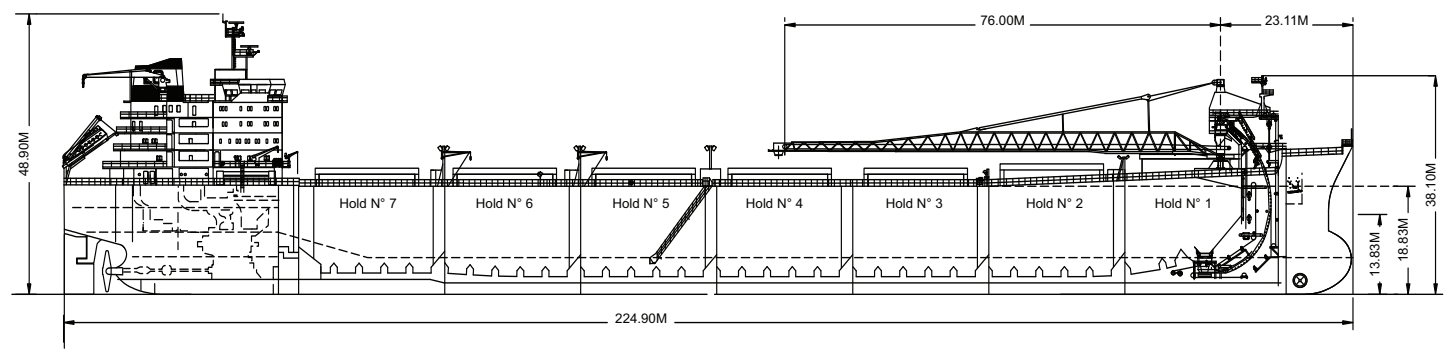
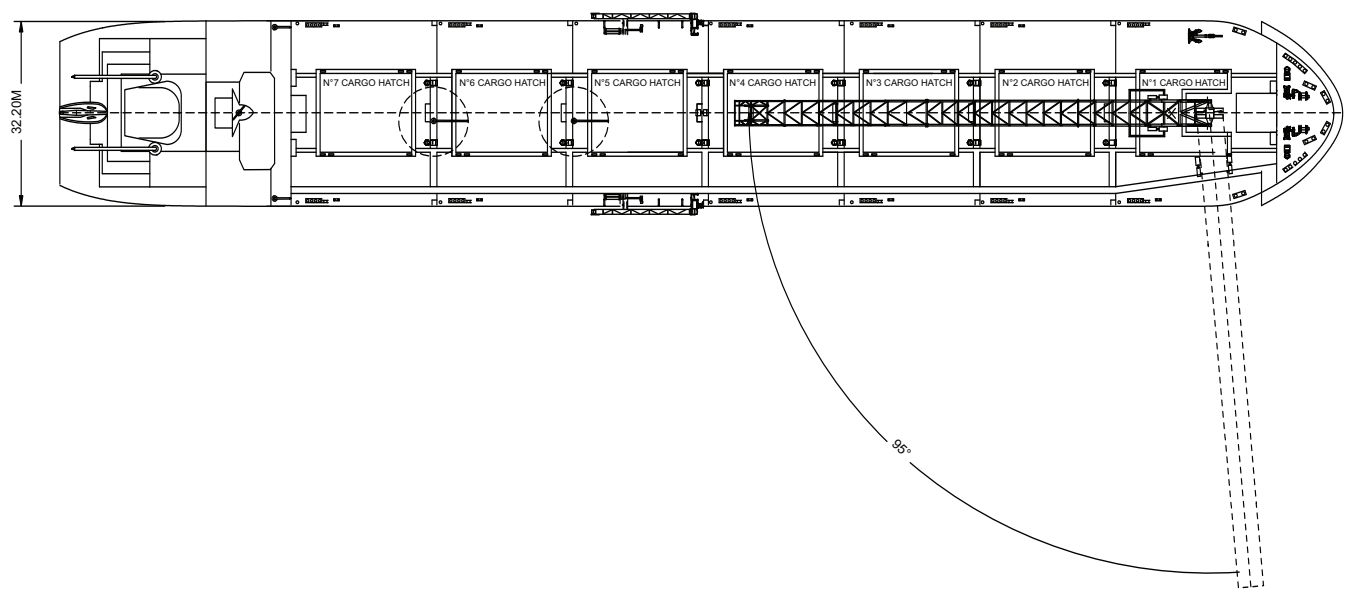
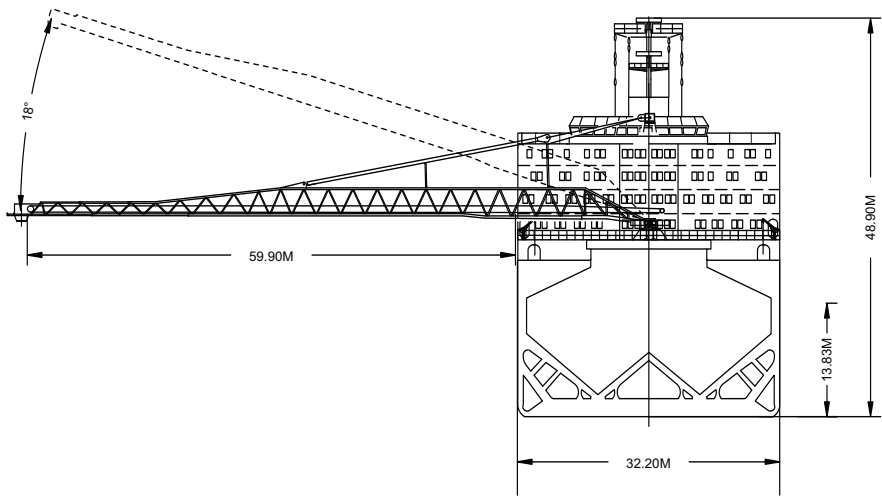




*Harmen Oldendorff departing Boston after discharging salt*

Built	..... 2005, converted to SUL-bulkcarrier in 2006
Classification	..... GL +100 A5, BC-B, ESP, E1, IW, C1D11, + MC, E1
Length Overall	..... 224.90 metres
Breadth Moulded	..... 32.20 metres
Depth Moulded	..... 18.84 metres
Total Hold Capacity (including hatches)	..... 61,521 cubic metres
Deadweight	..... 66,188 tonnes
Draft	..... 13.83 metres
Gross Tonnage	..... 42,033 tonnes
Net Tonnage	..... 18,012 tonnes
Bow Thruster	..... 1,500 kW
Length of Boom	..... 76.0 metres
Discharge Rate (maximum)	..... 4,000 tonnes/hr
	..... (or 5,000 cubic metres/hr)



0981-04 11/24/06

<b>Air Drafts</b>												
<i>(metres)</i>												
Draft Condition	Stem	Foremast	Hatches			Cargo Gear	Main Mast		Funnel	Stern	Other Obstruction*	Maximum
			Forward	Midship	Aft		Deployed	Lowered				
Keel	26.00	38.10	23.75	20.85	20.85	37.60	48.90	48.90	41.40	19.00	N/A	48.90
Light Ship	24.00	37.30	22.00	18.20	17.40	35.50	43.50	43.50	35.80	13.50	N/A	43.50
Normal Ballast 50% Bunker	20.20	32.24	17.05	13.97	13.41	31.70	41.15	41.15	33.60	11.10	N/A	41.15
Fully Loaded 50% Bunker	12.17	24.27	9.92	8.02	8.02	23.77	35.07	35.07	27.57	5.17	N/A	35.07

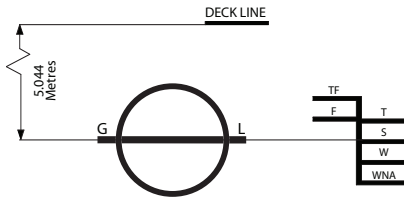
<b>Hatch and Hold Specifications</b>									
Hold Number	1	2	3	4	5	6	7	TOTAL	
<b>Hold Volumes (cubic metres)</b>									
Cubic (grain)	7,440	9,256	9,076	9,079	9,075	8,852	8,743	61,521	
Cubic in Hatchcoaming	463	596	508	508	508	508	508	3,599	
<b>Hold Openings (metres)</b>									
Number of Openings	1	1	1	1	1	1	1	7	
Opening Length	16.7 / 8.8	16.7	16.7	16.7	16.7	16.7	16.7	16.7	
Opening Width	15.2 / 2 x 4.18	15.2	15.2	15.2	15.2	15.2	15.2	15.2	
Coaming Height above Keel	23.0	21.7	21.0	21.0	21.0	21.0	21.0	21.0	
<b>Hatch Information (metres)</b>									
Description	Side Rolling	Side Rolling	Side Rolling	Side Rolling	Side Rolling	Side Rolling	Side Rolling		
Operation	Electric/Hydraulic	Electric/Hydraulic	Electric/Hydraulic	Electric/Hydraulic	Electric/Hydraulic	Electric/Hydraulic	Electric/Hydraulic	Electric/Hydraulic	
Hatch Length	17.00 m	17.00 m	17.00 m	17.00 m	17.00 m	17.00 m	17.00 m	17.00 m	
Hatch Width	7.75 m	7.75 m	7.75 m	7.75 m	7.75 m	7.75 m	7.75 m	7.75 m	
Hatch Top Height above Keel	24.85 m	22.75 m	21.95 m	21.95 m	21.95 m	21.95 m	21.95 m	21.95 m	

<b>Cargo Handling Equipment</b>	
• Fixed Type Conveyor along boom	
• Two variable speed (0.47 - 1.75m/s) hold conveyors	
• Two fixed speed (2.54m/s) transfer conveyors	
• One variable speed (1.43 - 4.77m/s) 'C' loop conveyor	
• One fixed speed (3.80m/s) boom conveyor	
• Hold conveyor belts 2.20m wide	
• Transfer conveyor belts 2.20m wide	
• 'C' loop conveyor 2.52m (outside belt) and 2.70m (inner belt) wide	
• Boom conveyor 1.80m wide	
• All belts have 35 degree trough	
• Dust Suppression: Holds are filled with positive air pressure dust collectors plus water/air sprayers on the boom	
• Discharge Rate:	
Coal	5,000 m <sup>3</sup> /hr
Ore/Gypsum/Granite	4,000 tonnes/hr
• Boom working area: 95° to port, 95° to starboard side	
• Maximum Boom Outreach: 61.90 metres	

<b>Consumption (tonnes per day)</b>					
	Speed		Main Engine HFO		Generators
	Loaded	Ballast	Loaded	Ballast	MDO
Sea	14.4	15.0	46.0	42.0	2.2
Port / Anchorage			N/A	N/A	2.0
Loading / Discharge			N/A	N/A	2.0 / 7.6

For more information on this ship please visit [www.cslint.com](http://www.cslint.com)





DEADWEIGHT SCALE									
DRAFT				DISPLACEMENT	TPC	DEADWEIGHT	DRAFT		
Sea Water		Fresh Water					Sea Water		
(metre)	(feet)	(metre)	(feet)	(tonnes)	(tonnes)	(tonnes)	(feet)	(metre)	
15		15					15		
	48		48	90,000		70,000	48	15	
14		14					46	14	
	46		46						
	44		44	80,000	67		44		
13		13				60,000	42	13	
	42		42						
	40		40				40	12	
12		12		70,000	66		38		
	38		38			50,000			
	36		36				36	11	
	34		34	60,000	65		34		
10		10				40,000	32	10	
	32		32						
	30		30				30	9	
9		9							
	28		28	50,000	63	30,000	28		
	26		26				26	8	
	24		24				24		
7		7		40,000	62		22	7	
	22		22			20,000			
	20		20				20	6	
6		6							
	18		18	30,000			18		
	16		16			10,000	16	5	
5		5							
	14		14				14	4	
4		4		20,000	59		12		
	12		12			0			
	10		10				10	3	
3		3							
	8		8				8		
2				10,000				2	

ASSIGNED DRAFTS			
Season	Draft (metre)	Displ. (tonnes)	DWT (tonnes)
TF	14.43	86,598	68,095
F	14.14	84,696	66,193
T	14.12	86,637	68,134
S	13.83	84,691	66,188
W	13.54	82,750	64,247
WNA	13.25	80,812	62,309

**Light Ship**  
18,503 tonnes

0981-04 11/27/06



For more information on this ship please visit [www.cslint.com](http://www.cslint.com)