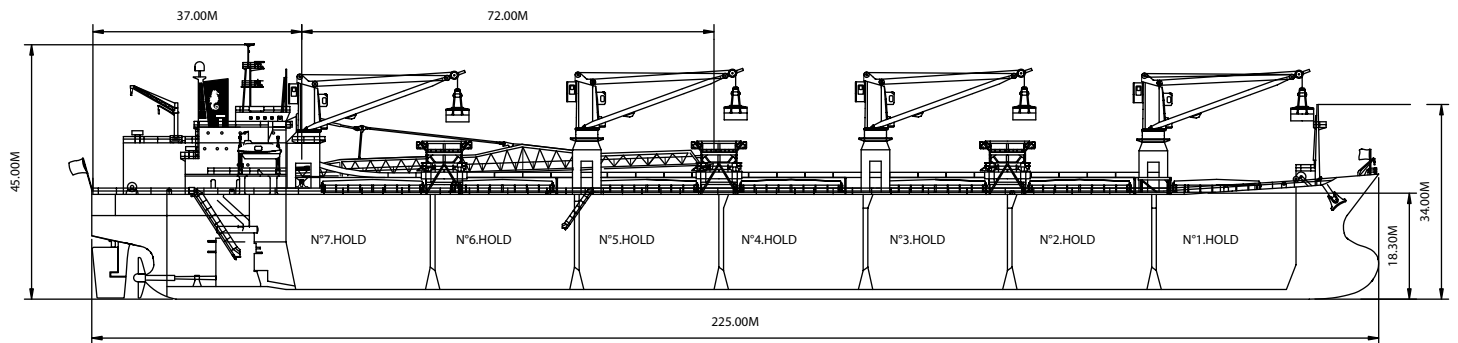
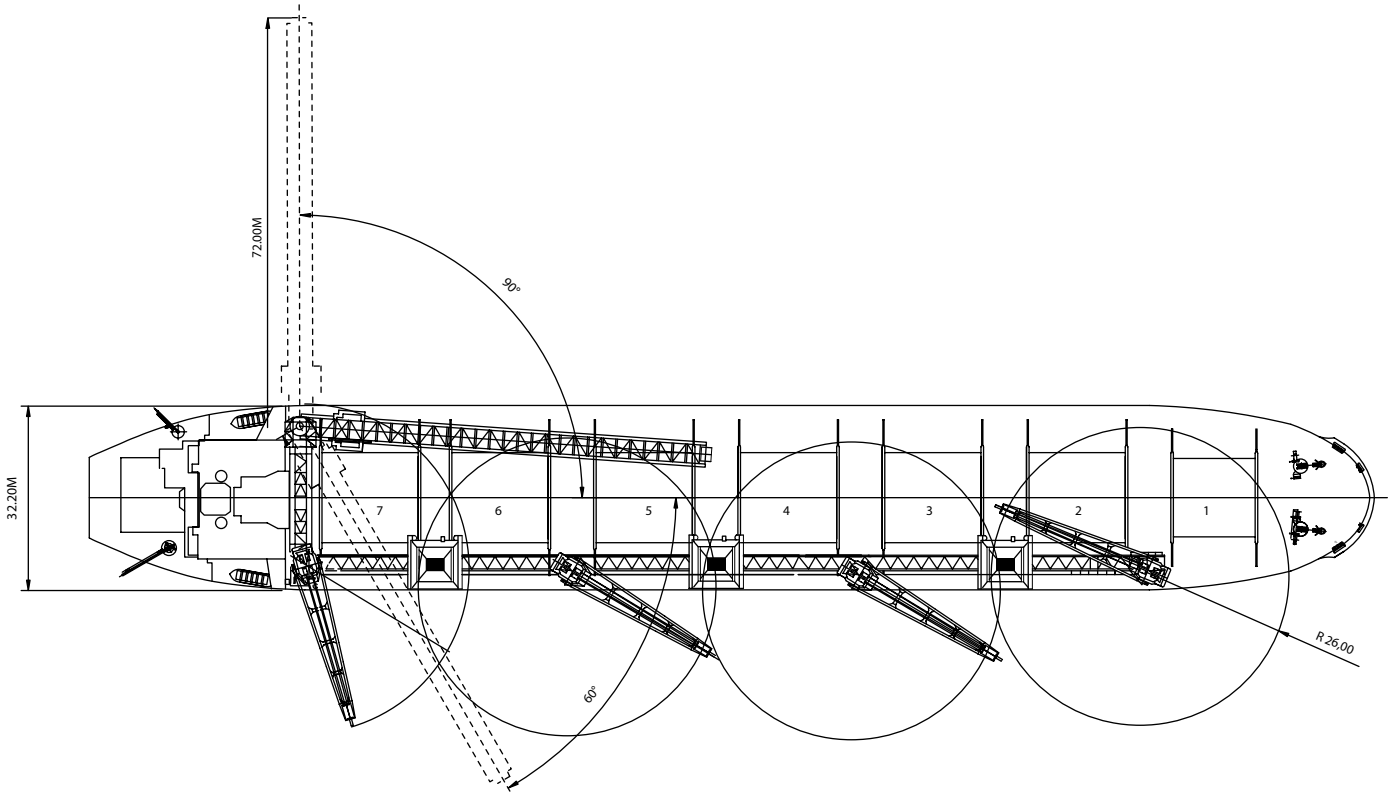
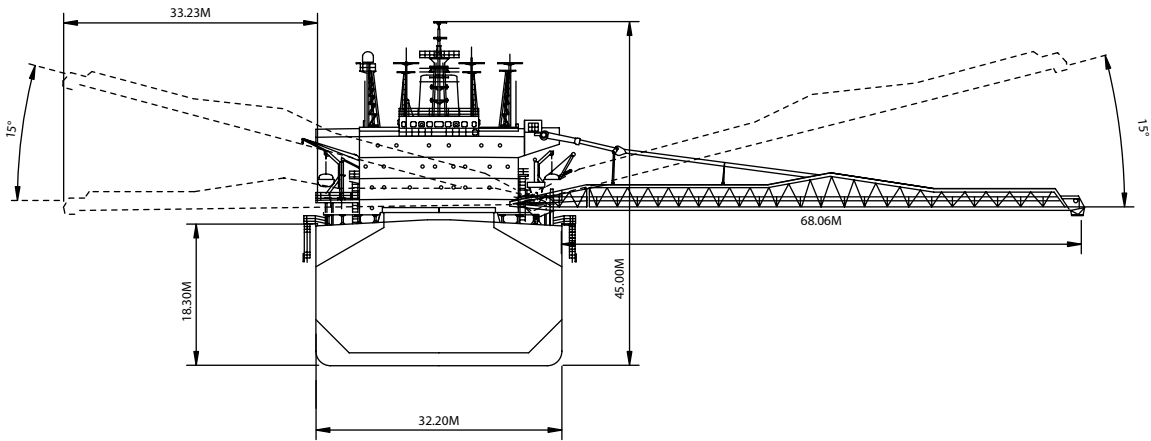




Eastern Power lightering to barges.

Built	.....	1989
Classification	..	Lloyds 100 A1 Holds 2,4,6 may be empty, ESP, LMC, UMS
Length Overall	.....	.225.00 metres
Breadth Moulded	.....	.32.20 metres
Depth Moulded	.....	.18.30 metres
Total Hold Capacity (including hatches)	.....	.81,807 cubic metres
Deadweight	.....	.68,433 tonnes
Draft	.....	.13.257 metres
Gross Tonnage	.....	.36,540 tonnes
Net Tonnage	.....	.23,026 tonnes
Length of Boom	.....	.72.00 metres
Discharge Rate	Coal.....	.2,000/1,200 tonnes/hr



0981-04 Rev.8+++ 17/06/05

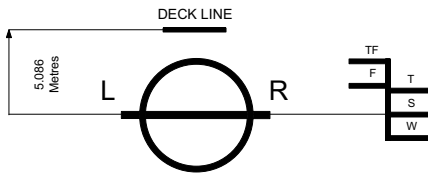
<b>Air Drafts</b>												
<i>(metres)</i>												
Draft Condition	Stem	Foremast	Hatches			Cargo Gear	Main Mast		Funnel	Stern	Other Obstruction	Maximum
			Forward	Midship	Aft		Deployed	Lowered				
Keel	23.00	34.14	20.70	20.96	20.70	40.90	45.00	N/A	38.50	21.00	39.40	45.00
Light Ship	22.40	33.54	20.10	20.36	20.10	40.30	41.17	N/A	34.67	17.17	38.80	41.17
Normal Ballast 50% Bunker	18.17	29.31	15.87	16.13	15.87	36.07	38.49	N/A	31.99	14.49	34.57	38.49
Fully Loaded 50% Bunker	9.74	20.88	7.44	7.70	7.44	27.64	31.74	N/A	25.24	7.74	26.14	31.74

<b>Hatch and Hold Specifications</b>									
Hold Number	1	2	3	4	5	6	7	TOTAL	
<b>Hold Volumes (cubic metres)</b>									
Cubic	10,232	11,748	11,691	11,763	11,775	11,754	11,037	80,000	
Maximum Grain	10,486	12,006	11,950	12,022	12,034	12,013	11,296	81,807	
Grain in way of Hatch	254	259	259	259	259	259	259	1,808	
<b>Hold Openings (metres)</b>									
Number of Openings	1	1	1	1	1	1	1	7	
Opening Length	14.60	17.20	17.20	17.20	17.20	17.20	17.20	17.20	
Opening Width	12.50	14.30	14.30	14.30	14.30	14.30	14.30	14.30	
Coaming Height above Keel	21.10	20.26	20.26	20.26	20.26	20.26	20.26	20.26	
<b>Hatch Information (metres)</b>									
Description	Pontoon, sliding both sides	Pontoon, sliding both sides	Pontoon, sliding both sides	Pontoon, sliding both sides	Pontoon, sliding both sides	Pontoon, sliding both sides	Pontoon, sliding both sides	Pontoon, sliding both sides	
Operation	Hydraulic	Hydraulic	Hydraulic	Hydraulic	Hydraulic	Hydraulic	Hydraulic	Hydraulic	
Hatch Length	14.60	17.20	17.20	17.20	17.20	17.20	17.20	17.20	
Hatch Width	12.50	14.30	14.30	14.30	14.30	14.30	14.30	14.30	
Hatch Top Height above Keel	21.80	20.96	20.96	20.96	20.96	20.96	20.96	20.96	

<b>Cargo Handling Equipment</b>
<ul style="list-style-type: none"> <li>One deck conveyor is on starboard side, one cross conveyor in front of accommodation. Boom is on port side.</li> </ul>
<ul style="list-style-type: none"> <li>Boom slewing angle : 90° to port side and 60° to starboard side.</li> </ul>
<ul style="list-style-type: none"> <li>Four 35-ton cranes are on starboard side. May swap between hook and grab mode. Max. crane outreach is 24 m over the starboard side. Max. crane SWL at hook mode is 33 tons and 21.5 tons at grab mode</li> </ul>
<ul style="list-style-type: none"> <li>Grab size 6 by 4 m, volume - 26 cubic meters</li> </ul>
<ul style="list-style-type: none"> <li>Dust suppression: Water spray on each hopper and boom end</li> </ul>
<ul style="list-style-type: none"> <li>Discharge Rate: 3,000 tonnes/hr</li> </ul>
<ul style="list-style-type: none"> <li>Straight boom, fixed conveyor length. Boom length is 72.00 metres.</li> </ul>

<b>Consumption (tonnes per day)</b>				
	Speed		Main Engine	Generators
	Loaded	Ballast	IFO	MDO
Sea	13.5	14.0	32.0	1.9
Port / Anchorage			1.5	1.8
Loading / Discharge			4.5	2.0

For more information on this ship please visit  
[www.cslint.com](http://www.cslint.com)



ASSIGNED DRAFTS			
Season	Draft (metre)	Displ. (tonnes)	DWT (tonnes)
TF	13.84	81,695	71,583
F	13.56	79,321	69,809
T	13.53	81,133	71,621
S	13.26	79,320	68,433
W	12.98	77,512	68,000

**Light Ship**  
11,109 tonnes

DEADWEIGHT SCALE									
DRAFT				DISPLACEMENT	TPC	DEADWEIGHT	DRAFT		
Sea Water		Fresh Water					Sea Water		
(metre)	(feet)	(metre)	(feet)	(tonnes)	(tonnes)	(tonnes)	(feet)	(metre)	
14	46	14	46		66		46	14	
	44		44	80,000		70,000	44		
13	42	13	42				42	13	
	40		40		65		40	12	
12	38	12	38	70,000			38		
	36		36		64		36	11	
	34		34	60,000		50,000	34		
10	32	10	32				32	10	
	30		30		62		30	9	
9	28	9	28	50,000		40,000	28		
	26		26				26	8	
8	24	8	24		61		24	7	
	22		22	40,000		30,000	22		
6	20	6	20		60		20	6	
	18		18			20,000	18		
5	16	5	16	30,000			16	5	
	14		14		59		14	4	
	12		12	20,000		10,000	12		
3	10	3	10				10	3	
	8		8		57		8		
2	6	2	6	10,000	56		6	2	

0981-04 Rev8+ 06/13/06



For more information on this ship please visit [www.cslint.com](http://www.cslint.com)