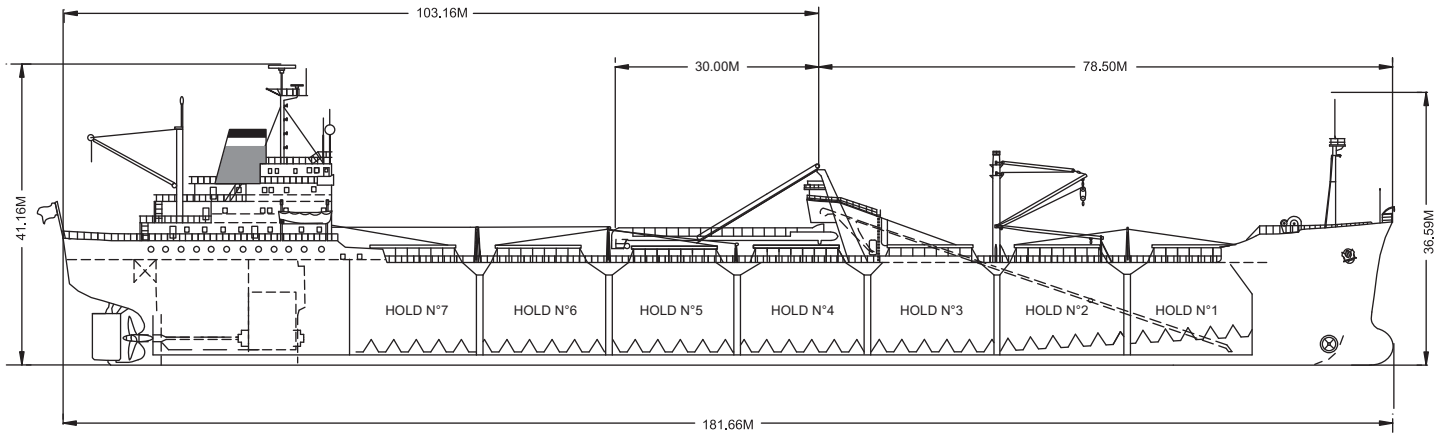
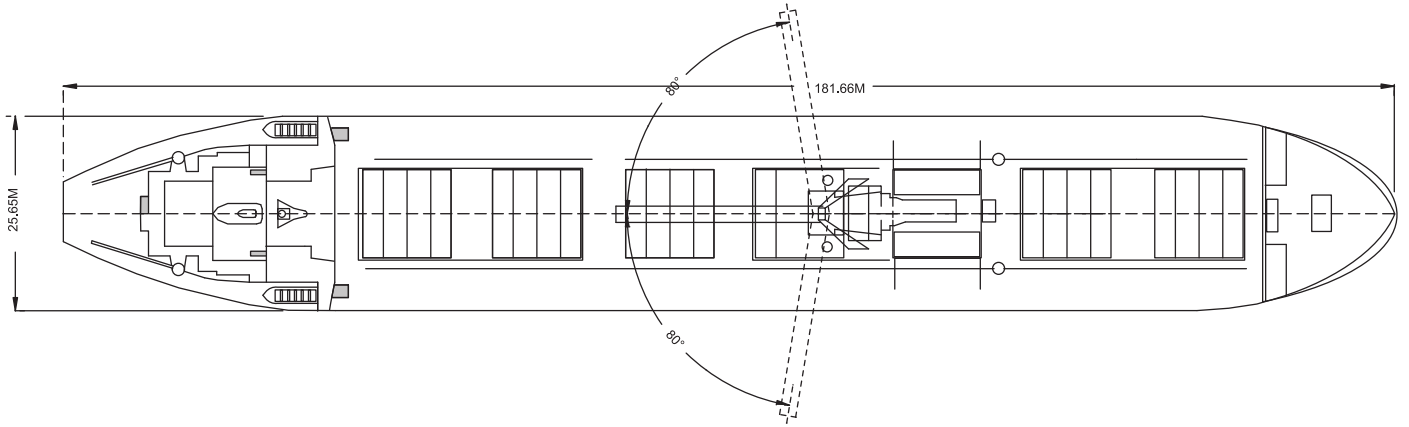
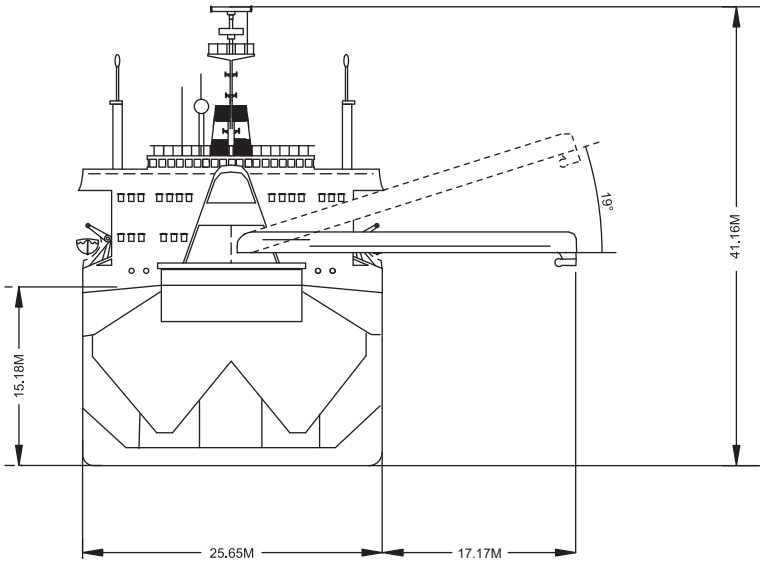




The CSL Cabo unloads gypsum into a barge alongside.

Built	1971
Classification	Lloyds +100 A1
Length Overall	181.66 metres
Breadth Moulded	25.66 metres
Depth Moulded	15.19 metres
Total Hold Capacity (including hatches)	23,985.00 cubic metres
Deadweight	31,365 tonnes
Draft	10.926 metres
Gross Tonnage	19,623 tonnes
Net Tonnage	8,129 tonnes
Bow Thruster	880 kW
Length of Boom	30.00 metres
Discharge Rate	-Gypsum	1,500 tonnes/hr
	-Stone	1,800 tonnes/hr



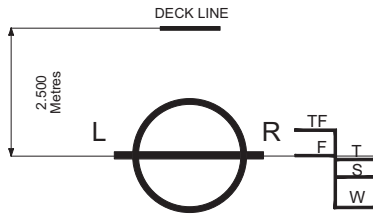
0981-04 12/08/04

Air Drafts												
(metres)												
Draft Condition	Stem	Foremast	Hatches			Cargo Gear	Main Mast		Funnel	Stern	Other Obstruction*	Maximum
			Forward	Midship	Aft		Deployed	Lowered				
Keel	19.60	31.40	20.90	17.75	17.75	29.80	41.16	N/A	33.0	N/A	Forward Cargo Gear	26.28
Light Ship	15.09	30.44	20.00	15.00	13.00	27.05	36.09	N/A	28.4	N/A	Forward Cargo Gear	25.38
Normal Ballast 50% Bunker	11.86	27.12	16.62	11.58	9.86	23.78	33.42	N/A	25.2	N/A	Forward Cargo Gear	22.00
Fully Loaded 50% Bunker	7.54	21.63	10.93	6.68	5.54	18.88	29.10	N/A	20.9	N/A	Forward Cargo Gear	16.51

Hatch and Hold Specifications									
Hold Number	1	2	3	4	5	6	7	TOTAL	
Hold Volumes (cubic metres)									
Cubic	2,152.0	3,197.0	3,659.0	3,729.0	3,729.0	3,729.0	3,790.0	23985.0	
Maximum Grain	1,930.0	2,868.0	3,282.0	3,345.0	3,345.0	3,345.0	3,400.0	21515.0	
Grain in way of Hatch	193.7	193.7	129.2	96.8	193.7	193.7	193.7	1194.5	
Hold Openings (metres)									
Number of Openings	1	1	2	1	1	1	1	8	
Opening Length	11.39	11.54	11.39	5.63	11.36	11.36	11.36		
Opening Width	12.00	12.00	3.70	12.00	12.00	12.00	12.00		
Coaming Height above Keel	17.20	17.20	17.26	17.26	17.26	17.26	17.26		
Hatch Information (metres)									
Description Operation	McGregor Wire ropes, Mooring Winch	McGregor Wire ropes, Mooring Winch	McGregor Wire ropes, Mooring Winch	McGregor Wire ropes, Mooring Winch	McGregor Wire ropes, Mooring Winch	McGregor Wire ropes, Mooring Winch	McGregor Wire ropes, Mooring Winch		
Hatch Length	11.81	11.82	11.67	5.91	11.64	11.64	11.64		
Hatch Width	12.23	12.23	3.98	12.23	12.23	12.23	12.23		
Hatch Top Height above Keel	17.75	17.75	17.59	17.85	17.76	17.76	17.76		

Cargo Handling Equipment
<ul style="list-style-type: none"> • Unloading Equipment: Fixed length unloading boom, 1600 tonnes per hour. Manually operated hydraulic gates. Inclined conveyor to deliver cargo to main deck.
<ul style="list-style-type: none"> • Dust Suppression System: Foam and water spray at boom end
<ul style="list-style-type: none"> • Unloader Boom Length: 30.00 metres
<ul style="list-style-type: none"> • Discharge Rate - Gypsum: 1,500 tonnes/hr - Stone: 1,800 tonnes/hr
<ul style="list-style-type: none"> • Maximum Boom Outreach: 17.17 metres

Consumption (tonnes per day)				
	Speed		Main Engine	Generators
	Loaded	Ballast	IFO	MDO
Sea	13 knots	14.5 knots	29	3
Port / Anchorage			0	2
Loading / Discharge			6	6



ASSIGNED DRAFTS			
Season	Draft (metre)	Displ. (tonnes)	DWT (tonnes)
TF	11,403	41,001	32,251
F	11,176	40,114	31,364
T	11,153	41,025	32,275
S	10,926	40,115	31,365
W	10,699	39,202	30,452

Light Ship
8,750 tonnes

DEADWEIGHT SCALE									
DRAFT				DISPLACEMENT	TPC	DEADWEIGHT	DRAFT		
Sea Water		Fresh Water					Sea Water		
(metre)	(feet)	(metre)	(feet)	(tonnes)	(tonnes)	(tonnes)	(feet)	(metre)	
11	36		38	40,000	40	30,000	11	36	
		11	36						
10	34		34				10	34	
		10	34						
	32		32					32	
		9	32						
9	30		30				9	30	
		9	30						
	28		28	30,000		20,000		28	
		8	28				8	26	
	26		26						
		8	26						
7	24		24		38		7	24	
		7	24					22	
	22		22						
		6	22				6	20	
6	20		20	20,000		10,000			
		6	20						
	18		18					16	
		5	18				5	16	
	16		16						
		5	16						
4	14		14				4	14	
		4	14					12	
	12		12						
		4	12						
3	10		10	10,000	36	1,000	3	10	
		3	10						
	8							8	

0981-04 08/18/04



For more information on this ship please visit www.cslint.com