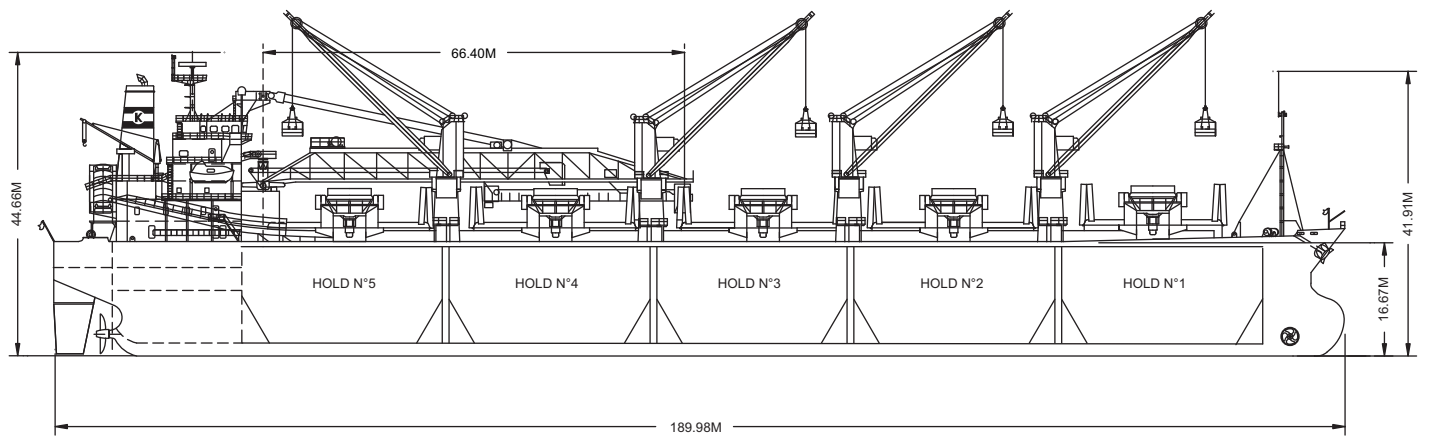
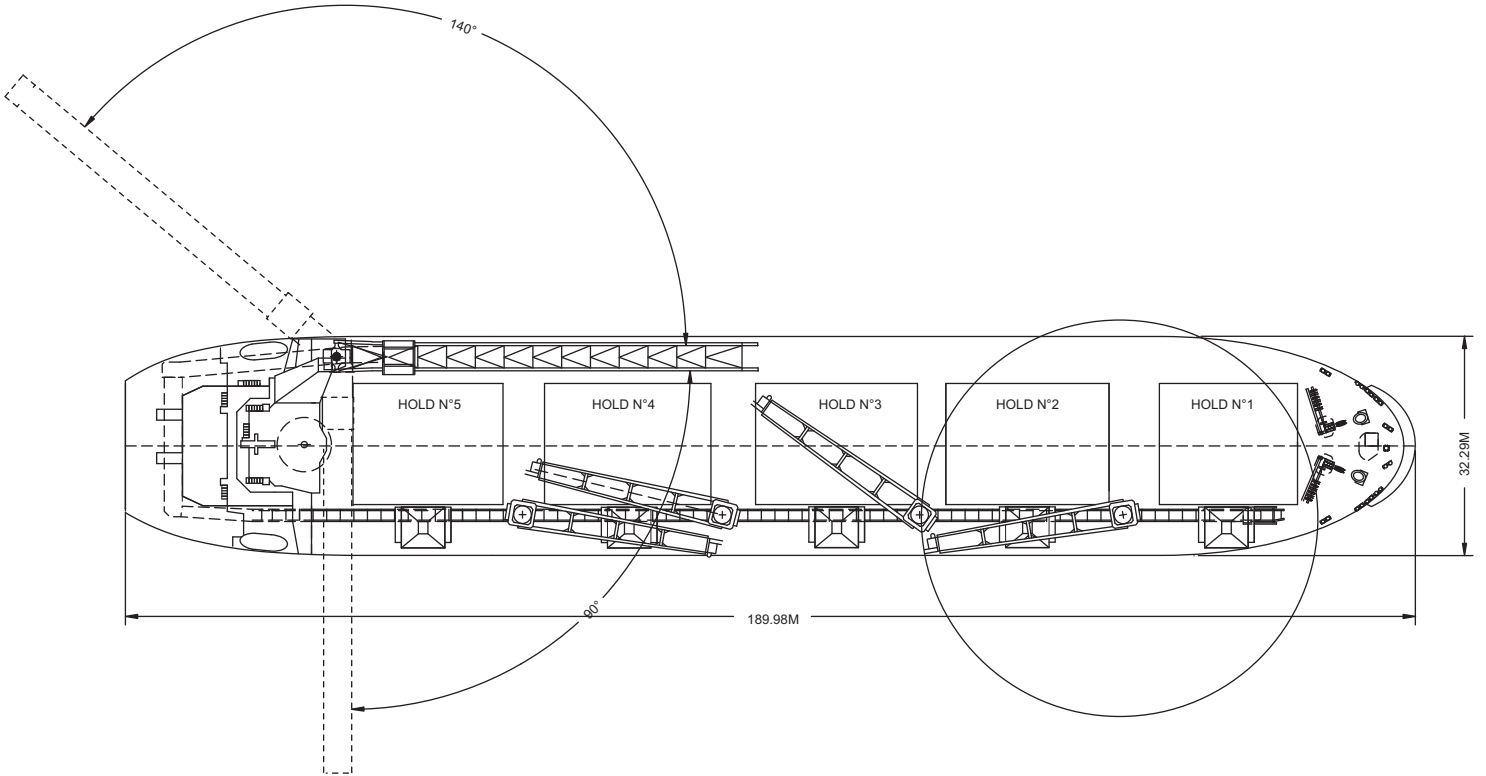
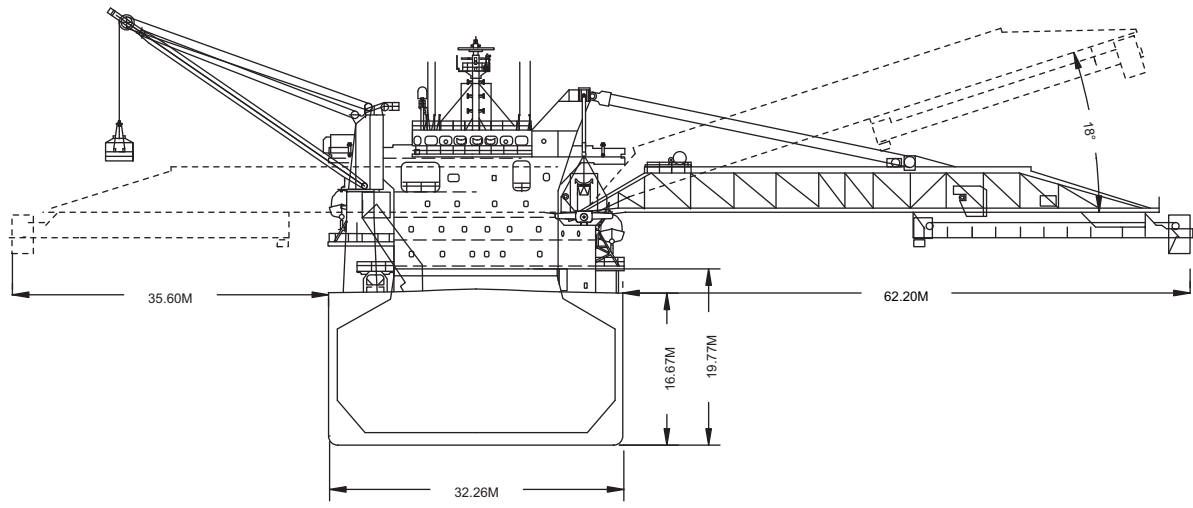




The Barkald performing a transshipment on the U.S. East Coast.

Built	2002
Classification	DNV +1A1
Length Overall	189.99 metres
Breadth Moulded	32.26 metres
Depth Moulded	16.67 metres
Total Hold Capacity (including hatches)	64,385 cubic metres
Deadweight	49,463 tonnes
Draft	11.913 metres
Gross Tonnage	28,912 tonnes
Net Tonnage	17,772 tonnes
Bow Thruster	1,500 kw
Length of Boom	66.40 metres ext.
Discharge Rate	-Coal 1,000 tonnes/hr



0961-04 12/03/04

Air Drafts												
<i>(metres)</i>												
Draft Condition	Stem	Foremast	Hatches			Cargo Gear	Main Mast		Funnel	Stern	Other Obstruction*	Maximum
			Forward	Midship	Aft		Deployed	Lowered				
Keel	21.20	41.91	19.84	18.90	18.90	38.21	44.66	N/A	41.50	18.90	22.97/27.37	44.66
Light Ship	20.59	41.30	18.87	16.49	14.78	35.80	40.54	N/A	37.38	14.78	20.56/24.96	40.54
Normal Ballast 50% Bunker	16.68	34.81	12.75	13.21	12.09	32.52	37.85	N/A	34.69	12.09	17.28/21.68	37.85
Fully Loaded 50% Bunker	9.58	30.29	8.23	7.28	7.28	26.59	33.04	N/A	29.88	7.28	11.35/15.75	33.04

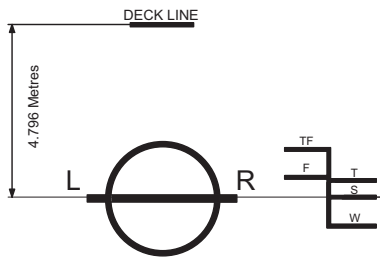
*Grab/Jibrest

Hatch and Hold Specifications									
Hold Number	1	2	3	4	5	6	7	TOTAL	
Hold Volumes (cubic metres)									
Cubic	11,555	13,993	13,030	13,898	11,909				64,385
Maximum Grain	11,555	13,993	13,030	13,898	11,909				64,385
Grain in way of Hatch	N/A	N/A	N/A	N/A	N/A				N/A
Hold Openings (metres)									
Number of Openings	2	2	2	2	2				10
Opening Length	2 x 8.93	2 x 10.20	2 x 9.35	2 x 10.20	2 x 10.20				
Opening Width	17.60	17.60	17.60	17.60	17.60				
Coaming Height above Keel	19.85	18.90	18.90	18.90	18.90				
Hatch Information (metres)									
Description	Folding pane	Folding pane	Folding pane	Folding pane	Folding pane				
Operation	Hydraulic	Hydraulic	Hydraulic	Hydraulic	Hydraulic				
Hatch Length	17.85	20.40	18.70	20.40	20.40				
Hatch Width	17.60	17.60	17.60	17.60	17.60				
Hatch Top Height above Keel	20.74	19.79	19.79	19.79	19.79				

Cargo Handling Equipment	
• Selfloading/unloading equipment: 4 Tsuji cranes swl 30 tonnes, 4 Orts grab 20.0 cbm capacity, 5 unloading hoppers (one each hold) and 2 payloaders for trimming holds.	
• One longitudinal conveyor, one cross conveyor, one incline conveyor and one boom conveyor discharge rate of (max) 1,800 t/hr.	
• Dust Suppression System: Water spray system located in each hopper and at each conveyor transfer point	
• Unloader Boom Length: 66.40 m	
• Discharge Rate:	
Coal:	1,000 mt/hr including payloaders trimming/sweeping
Aggregates:	1,600 mt/hr including payloaders trimming/sweeping

Consumption (tonnes per day)				
	Speed		Main Engine	Generators
	Loaded	Ballast		
Sea	14	15	32.5	0
Port / Anchorage			2.5	0
Selfloading / Discharge			5.0	0

For more information on this ship please visit
www.cslint.com



ASSIGNED DRAFTS			
Season	Draft (metre)	Displ. (tonnes)	DWT (tonnes)
TF	12.43	60,260	50,795
F	12.18	58,935	49,470
T	12.16	60,282	50,817
S	11.91	58,928	49,463
W	11.66	57,578	48,113

Light Ship
9,465 tonnes

DEADWEIGHT SCALE									
DRAFT				DISPLACEMENT	TPC	DEADWEIGHT	DRAFT		
Sea Water		Fresh Water					Sea Water		
(metre)	(feet)	(metre)	(feet)	(tonnes)	(tonnes)	(tonnes)	(feet)	(metre)	
12	40	12	40	60,000	55	50,000	40	12	
11	38	11	38		54		38	11	
10	36	10	36	50,000	53	40,000	36	10	
9	34	9	34		52		34	9	
8	32	8	32	40,000	51	30,000	32	8	
7	30	7	30		50		30	7	
6	28	6	28	30,000	49	20,000	28	6	
5	26	5	26		48		26	5	
4	24	4	24	20,000	47	10,000	24	4	
3	22	3	22	10,000	46		22	3	
2	20	2	20		45		20	2	
	18		18		44		18		
	16		16		43		16		
	14		14		42		14		
	12		12		41		12		
	10		10		40		10		
	8		8		39		8		
	6		6		38		6		

0981-04 08/22/04



For more information on this ship please visit www.cslint.com