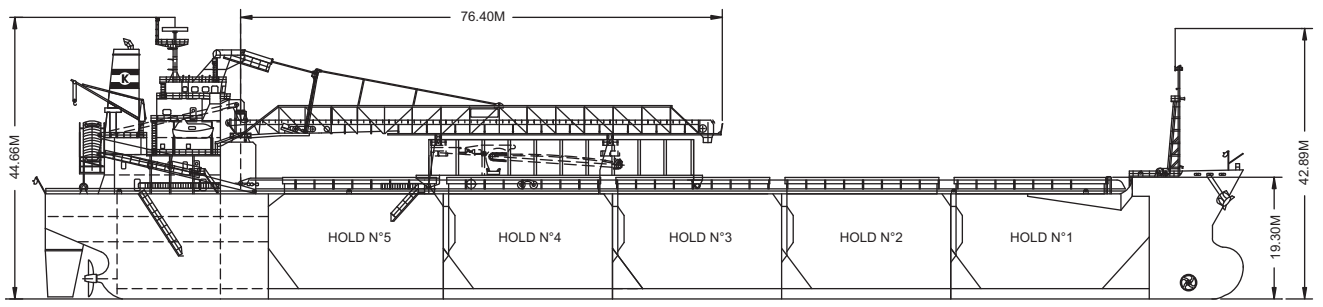
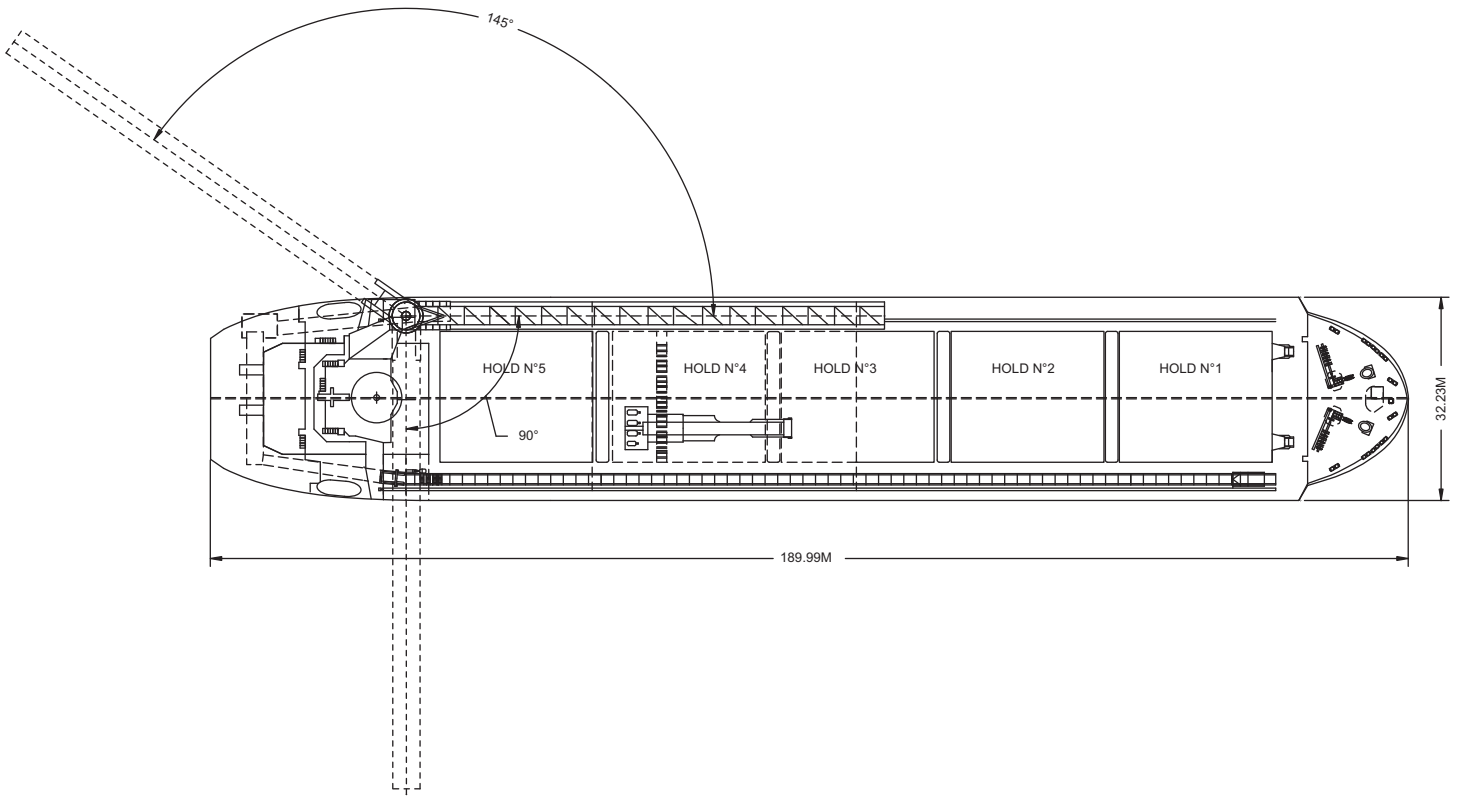
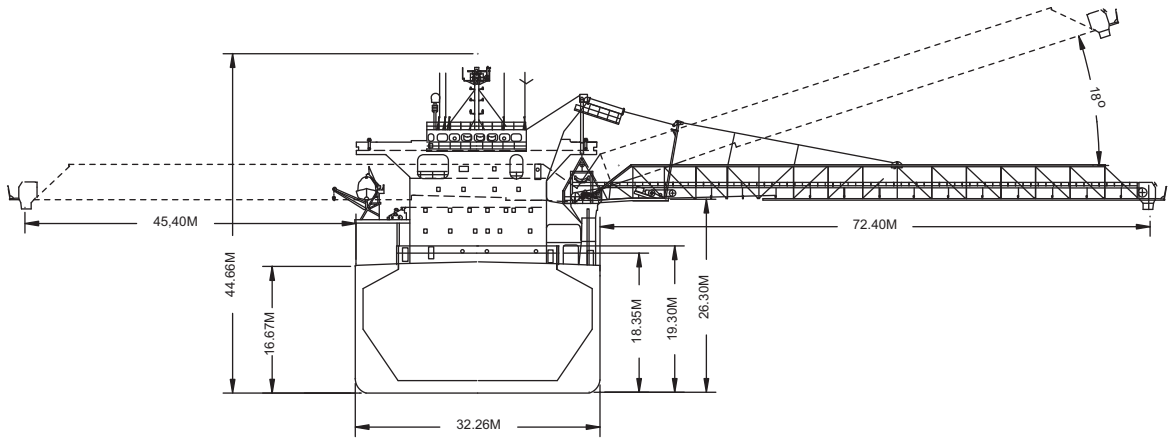




*The Balder unloading into a hopper
at Sydney, NS.*

Built	2002
Classification	DNV +1A1
Length Overall	189.99 metres
Breadth Moulded	32.26 metres
Depth Moulded	16.67 metres
Total Hold Capacity (including hatches)	55,904 cubic metres
Deadweight	48,184 tonnes
Draft	11.724 metres
Gross Tonnage	30,739 tonnes
Net Tonnage	14,515 tonnes
Bow Thruster	1,500 kW
Length of Boom	76.40 metres
Discharge Rate	1,875 tonnes/hr



0981-04 12/03/04

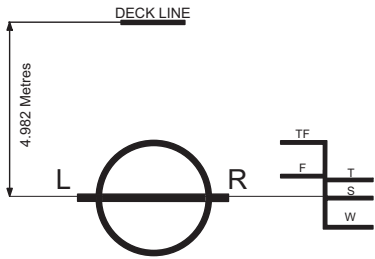
Air Drafts (metres)											
Draft Condition	Stem	Foremast	Hatches			Main Mast		Funnel	Stern	Other Obstruction*	Maximum
			Forward	Midship	Aft	Deployed	Lowered				
Keel	20.71	42.89	19.40	19.40	19.40	44.66	N/A	41.80	16.71	N/A	44.66
Light Ship	20.15	42.39	19.03	16.89	21.71	40.56	N/A	37.49	11.72	N/A	40.56
Normal Ballast 50% Bunker	14.11	36.92	14.96	12.20	15.61	37.95	N/A	34.74	8.53	N/A	37.95
Fully Loaded 50% Bunker	8.99	31.17	7.68	7.68	7.68	32.94	N/A	30.08	4.99	N/A	32.94

Hatch and Hold Specifications									
Hold Number	1	2	3	4	5	6	7	TOTAL	
Hold Volumes (cubic metres)									
Cubic	10,485	10,550	10,549	10,539	10,606				52,729
Maximum Grain	11,120	11,185	11,184	11,174	11,241				55,904
Grain in way of Hatch	635	635	635	635	635				3,175
Hold Openings (metres)									
Number of Openings	1	1	1	1	1				5
Opening Length	24.0	24.0	24.0	24.0	24.0				
Opening Width	20.5	20.5	20.5	20.5	20.5				
Coaming Height above Keel	19.3	19.3	19.3	19.3	19.3				
Hatch Information (metres)									
Description	Folding Hydraulic	End Rolling Hydraulic chain winch	End Rolling Hydraulic chain winch	End Rolling Hydraulic chain winch	End Rolling Hydraulic chain winch				
Operation									
Hatch Length	6.0412 m x 4	24.165 m	24.165 m	24.165 m	24.165 m				
Hatch Width	20.64 m	20.64 m	20.64 m	20.64 m	20.64 m				
Hatch Top Height above Keel									

Cargo Handling Equipment
<ul style="list-style-type: none"> Self Discharging Equipment: Top reclaiming continuous unloading unit (BR-unit); maximum elevator speed: 1.75 m/s, 2 pay loaders for trimming in cargo holds
<ul style="list-style-type: none"> Garage Size: L 43.1 m, B 28.4 m, H 7.91 m; conveyor belts: width 1600 mm, speed 3.9 m/s
<ul style="list-style-type: none"> Boom Conveyor: Length 76.40 m, Luffing 4-14 degrees, Slewing range: port 140 degrees, stbd 90 degrees
<ul style="list-style-type: none"> Conveyor System: one longitudinal conveyor, one transfer, one cross conveyor, one incline conveyor, one boom conveyor
<ul style="list-style-type: none"> Camera Locations: top boom structure, in the chute, and top reclaimer.
<ul style="list-style-type: none"> Dust Suspension System: water spray system in the end of the conveyor belts and end of the telescopic chute.
<ul style="list-style-type: none"> Top Reclaiming Continuous Unloading Unit (BR - unit) maximum elevator speed: 1.75 m/s

Consumption (tonnes per day)				
	Speed		Main Engine	Generators
	Loaded	Ballast	IFO	MDO
Sea	14.3	14.3	34.6MT/day	0.1
Port / Anchorage			3.8	0.1
Loading / Discharge			6.1	0.1

For more information on this ship please visit www.cslint.com



ASSIGNED DRAFTS			
Season	Draft (metre)	Displ. (tonnes)	DWT (tonnes)
TF	12.24	59,206	49,491
F	11.99	57,905	48,190
T	11.97	59,228	49,513
S	11.72	57,899	48,184
W	11.48	56,574	46,859

Light Ship
9,715 tonnes

DEADWEIGHT SCALE									
DRAFT				DISPLACEMENT	TPC	DEADWEIGHT	DRAFT		
Sea Water		Fresh Water					Sea Water		
(metre)	(feet)	(metre)	(feet)	(tonnes)	(tonnes)	(tonnes)	(feet)	(metre)	
			42		55				
12	40	12	40	60,000		50,000	40	12	
	38		38		54		38		
11	36	11	36				36	11	
	34		34	50,000		40,000	34		
10	32	10	32		53		32	10	
	30		30		52		30		
9	28	9	28	40,000		30,000	28	9	
	26		26		51		26		
8	24	8	24				24	8	
	22		22	30,000		20,000	22		
7	20	7	20		50		20	7	
	18		18				18		
6	16	6	16	20,000	49	10,000	16	6	
	14		14		48		14		
5	12	5	12	10,000	47		12	5	
	10		10				10		
4	8	4	8		46		8	4	
	6		6				6		
3		3						3	
2		2						2	

0981-04 08/20/04



For more information on this ship please visit www.cslint.com