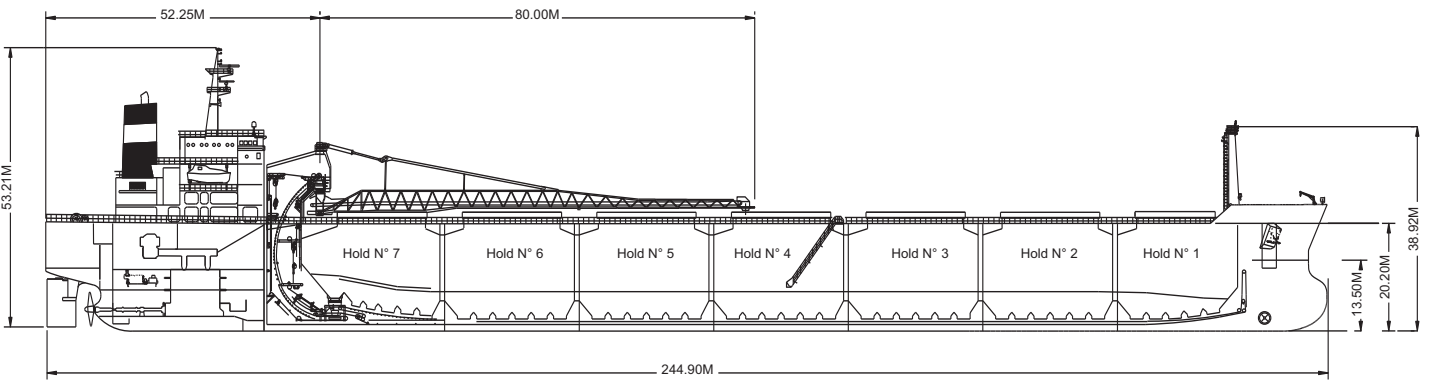
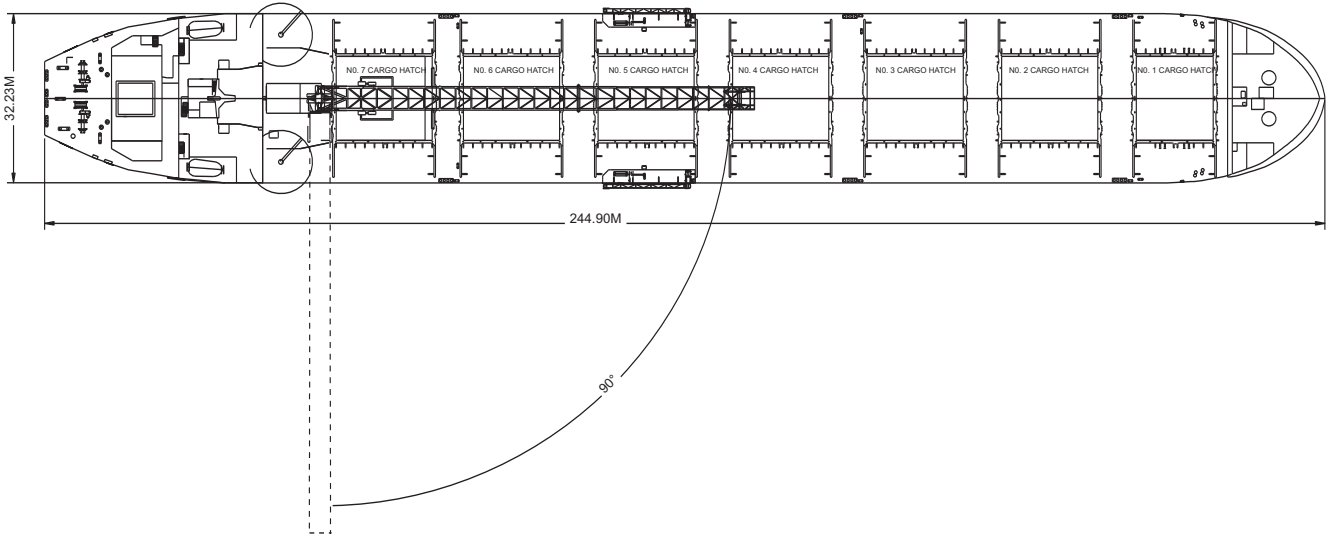
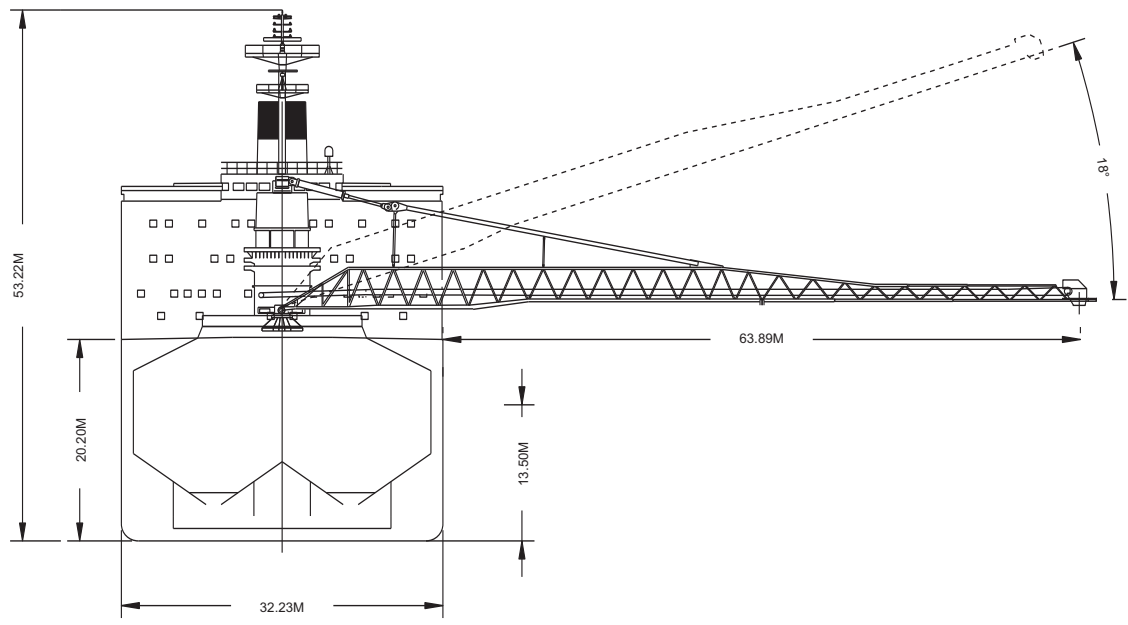




CSL Argosy on sea trials.

Built 1981, rebuilt with a new forebody in 2006
Classification	Lloyds+100A1, Bulk Carrier,ESP, Shipright(SDA,FDA,CM)+LMC,UMS
Length Overall 244.90 metres
Breadth Moulded 32.23 metres
Depth Moulded 20.20 metres
Total Hold Capacity (including structure) 75,243.80 cubic metres
Deadweight 74,423.00 tonnes
Draft (summer) 13.50 metres
Gross Tonnage 46,409.00 tonnes
Net Tonnage 17,235.00 tonnes
Bow Thruster 1,500.00 kW
Length of Boom 80.00 metres
Discharge Rate (design)	Coal..... 4,200.00 tonnes/hr
	Gypsum..... 4,500.00 tonnes/hr
	Stone..... 5,000.00 tonnes/hr
	Iron Ore..... 6,000.00 tonnes/hr
	Maximum..... 6,000.00 tonnes/hr



0981-04 04/25/06

Air Drafts												
(metres)												
Draft Condition	Stem	Foremast	Hatches			Cargo Gear	Main Mast		Funnel	Stern	Other Obstruction	Maximum
			Forward	Midship	Aft		Deployed	Lowered				
Keel	24.1	38.92	22.15	22.15	22.15	36.13	53.21	50.20	43.45	20.20	N/A	53.21
Light Ship	23.51	38.00	21.03	19.64	18.23	32.00	48.71	45.70	38.74	15.09	N/A	48.71
Normal Ballast 50% Bunker	17.02	31.70	14.84	14.22	13.59	27.48	44.40	41.38	34.54	11.12	N/A	44.40
Fully Loaded 50% Bunker	10.64	25.45	8.68	8.65	8.62	22.60	39.67	36.66	29.91	6.64	N/A	39.67

Hatch and Hold Specifications									
Hold Number	1	2	3	4	5	6	7	TOTAL	
Hold Volumes (cubic metres)									
Cubic	8,994.76	11,135.97	11,139.83	11,139.79	11,139.78	11,139.77	10,177.69	74,867.59	
Maximum Grain	9,039.96	11,191.93	11,195.81	11,195.77	11,195.76	11,195.75	10,228.84	75,243.82	
Grain in way of Hatch	45.20	55.96	55.98	55.98	55.98	55.98	51.15	376.23	
Hold Openings (metres)									
Number of Openings	1	1	1	1	1	1	1	7	
Opening Length	14.63	18.29	18.29	18.29	18.29	18.29	16.46		
Opening Width	15.98	15.98	15.98	15.98	15.98	15.98	15.98		
Coaming Height above Keel	21.50	21.50	21.50	21.50	21.50	21.50	21.50		
Hatch Information (metres)									
Description	Side Rolling Panels	Side Rolling Panels	Side Rolling Panels	Side Rolling Panels	Side Rolling Panels	Side Rolling Panels	Side Rolling Panels	Side Rolling Panels	
Operation	Hydraulic	Hydraulic	Hydraulic	Hydraulic	Hydraulic	Hydraulic	Hydraulic	Hydraulic	
Hatch Length	14.93	18.59	18.59	18.59	18.59	18.59	16.76		
Hatch Width	16.30	16.30	16.30	16.30	16.30	16.30	16.30		
Hatch Top Height above Keel	22.15	22.15	22.15	22.15	22.15	22.15	22.15		

Cargo Handling Equipment
• Fixed type conveyor along boom
• Two 2.6m/s hold conveyors
• Two 2.5m/s transfer conveyors
• One 3.6m/s boom conveyor
• One 4.32m/s 'C' loop conveyor
• Tunnel belts 2.135m wide
• Boom belt 1.981m wide
• Transfer belt 2.135m wide
• All belts have 35 degree trough
• Dust Suppression: Boom and transfer points are filled with positive air pressure dust collectors plus water sprayers on the boom and foam sprayers in the transfers.
• Discharge Rate: Coal 4,200 tonnes/hr Ore 6,000 tonnes/hr
• Maximum Boom Outreach: 63.89 metres

Consumption (tonnes per day)				
	Speed		Main Engine	Generators
	Loaded	Ballast		
Sea	14.5	15.0	48.0	2.5
Port / Anchorage			N/A	2.5
Loading / Discharge			N/A	2.5 / 7.5

For more information on this ship please visit www.cslint.com



