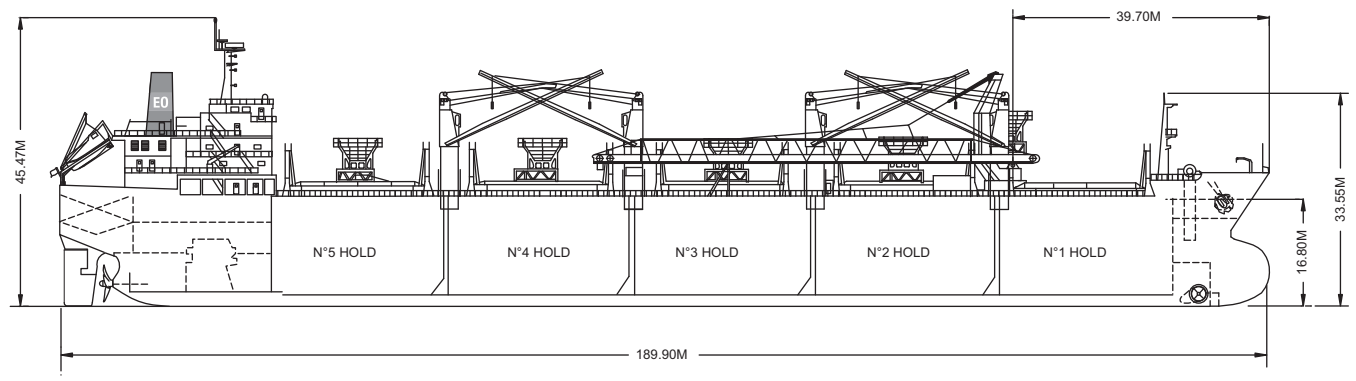
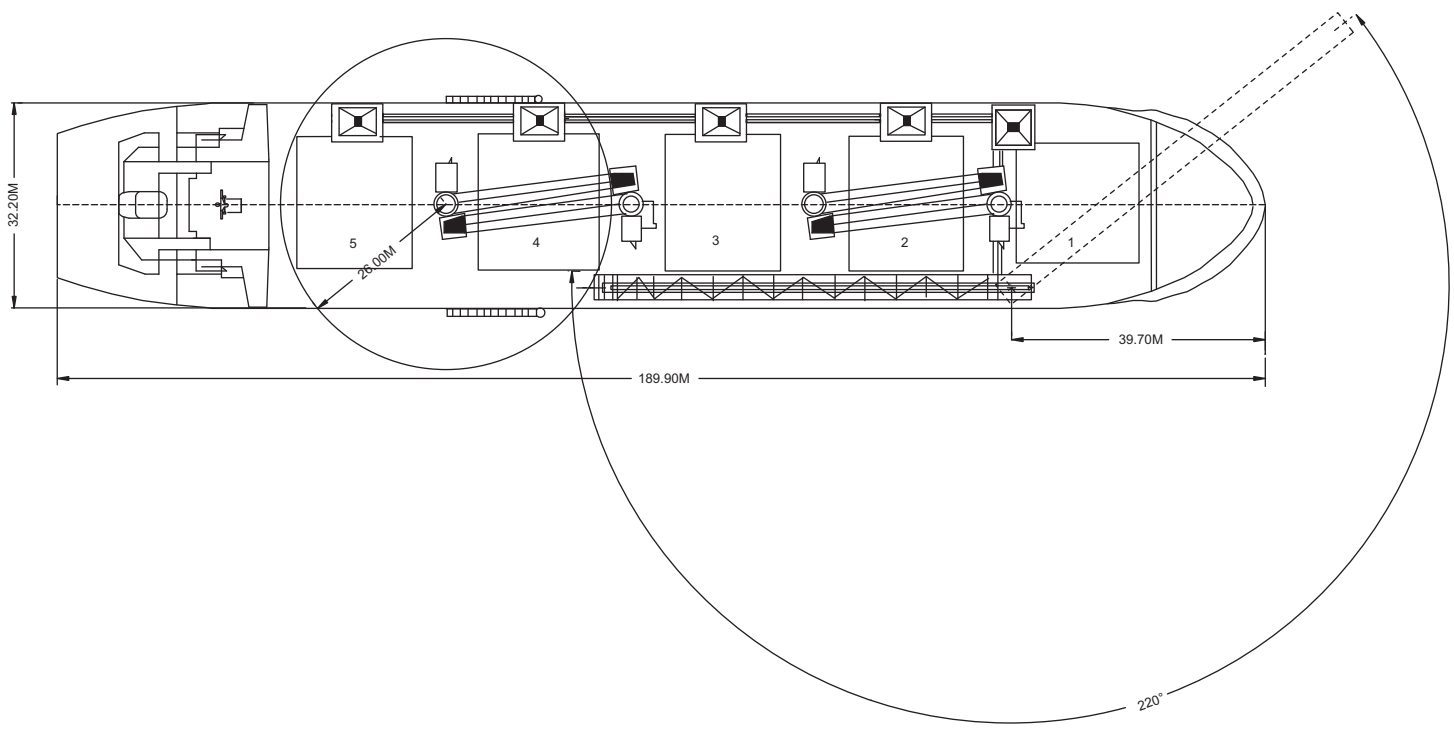
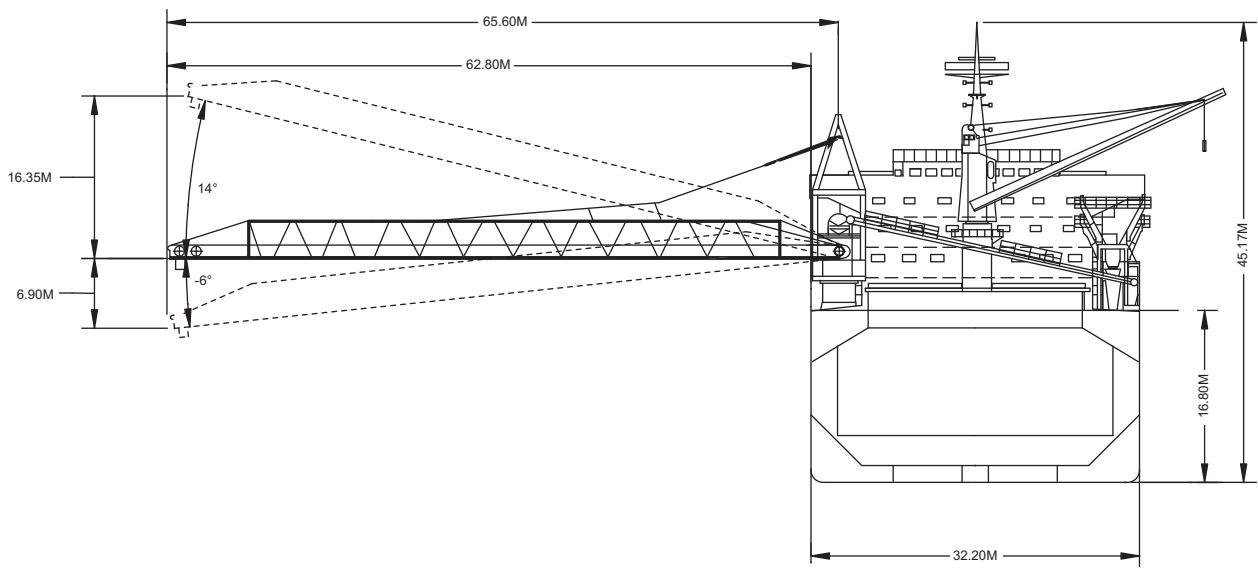




Discharging into a hopper at Savannah, GA.

Built	.....	2000
Classification	.....	GL +100 A5
Length Overall	.....	189.90 metres
Breadth Moulded	.....	32.20 metres
Depth Moulded	.....	16.80 metres
Total Hold Capacity (including hatches)	.....	59,742.40 cubic metres
Deadweight	.....	50,259.4 tonnes
Draft	.....	12.17 metres
Gross Tonnage	.....	28,747 tonnes
Net Tonnage	.....	15,504 tonnes
Bow Thruster	.....	880 kW
Length of Boom	.....	65.60 metres
Discharge Rate	-Coal .....	750 tonnes/hr
	-Ore .....	750 tonnes/hr



0981-04 08/19/04

<b>Air Drafts</b>												
<i>(metres)</i>												
Draft Condition	Stem	Foremast	Hatches			Cargo Gear	Main Mast		Funnel	Stern	Other Obstruction*	Maximum
			Forward	Midship	Aft		Deployed	Lowered				
Keel	20.90	33.55	19.33	19.33	19.33	36.06	45.47	N/A	33.8	18.50	Highest Hopper, Port Side	27.70
Light Ship	17.07	32.36	18.14	16.82	15.70	33.55	41.82	N/A	30.0	16.40	Highest Hopper, Port Side	25.30
Normal Ballast 50% Bunker	14.76	28.40	14.80	13.70	13.50	30.43	39.50	N/A	27.7	14.76	Highest Hopper, Port Side	22.60
Fully Loaded 50% Bunker	8.73	21.38	7.16	7.16	7.16	23.89	33.30	N/A	21.6	6.33	Highest Hopper, Port Side	16.40

<b>Hatch and Hold Specifications</b>									
Hold Number	1	2	3	4	5	6	7	TOTAL	
<b>Hold Volumes (cubic metres)</b>									
Cubic	10,174.3	11,983.9	11,986.2	11,986.2	11,289.7				57420.3
Maximum Grain	10,548.8	12,470.8	12,473.1	12,473.1	11,776.6				59742.4
Grain in way of Hatch	374.5	486.9	486.9	486.9	486.9				2322.1
<b>Hold Openings (metres)</b>									
Number of Openings	1	1	1	1	1				5
Opening Length	16.00	17.60	17.60	17.60	17.60				
Opening Width	17.60	20.80	20.80	20.80	20.80				
Coaming Height above Keel	19.30	19.30	19.30	19.30	19.30				
<b>Hatch Information (metres)</b>									
Description	Huahai Kvaerner	Huahai Kvaerner	Huahai Kvaerner	Huahai Kvaerner	Huahai Kvaerner				
Operation	Hydraulic Folding	Hydraulic Folding	Hydraulic Folding	Hydraulic Folding	Hydraulic Folding				
Hatch Length	16.38	17.98	17.98	17.98	17.98				
Hatch Width	8.00	21.20	21.20	21.20	21.20				
Hatch Top Height above Keel	18.70	18.70	18.70	18.70	18.70				

<b>Cargo Handling Equipment</b>
<ul style="list-style-type: none"> <li>• Unloading Equipment: Krupp System with deck mounted three conveyor belts including slewing boom. Five hoppers with vibration feeders. Material passes through the hoppers onto the a longitudinal conveyor to a cross conveyor to the base of the main unloading boom.</li> </ul>
<ul style="list-style-type: none"> <li>• Dust Suppression System: Water Spray</li> </ul>
<ul style="list-style-type: none"> <li>• Overall Length: <ul style="list-style-type: none"> <li>• Boom Length: 65.60 metres</li> <li>• Max Outreach STBD side: 62.80 metres</li> <li>• Max Outreach PORT side: 17.94 metres</li> </ul> </li> </ul>
<ul style="list-style-type: none"> <li>• Discharge Rate - Coal: 750 tonnes/hr</li> <li style="padding-left: 20px;">Ore: 750 tonnes/hr</li> </ul>
<ul style="list-style-type: none"> <li>• Vessel fitted with 4 electro-hydraulic cranes with 12 cubic metre grabs</li> </ul>

<b>Consumption (tonnes per day)</b>				
	Speed		Main Engine	Generators
	Loaded	Ballast	IFO	MDO
Sea	14.2 knots	14.6 knots	34.5	0
Port / Anchorage			3.5	0.1
Loading / Discharge			5.5	0.1

