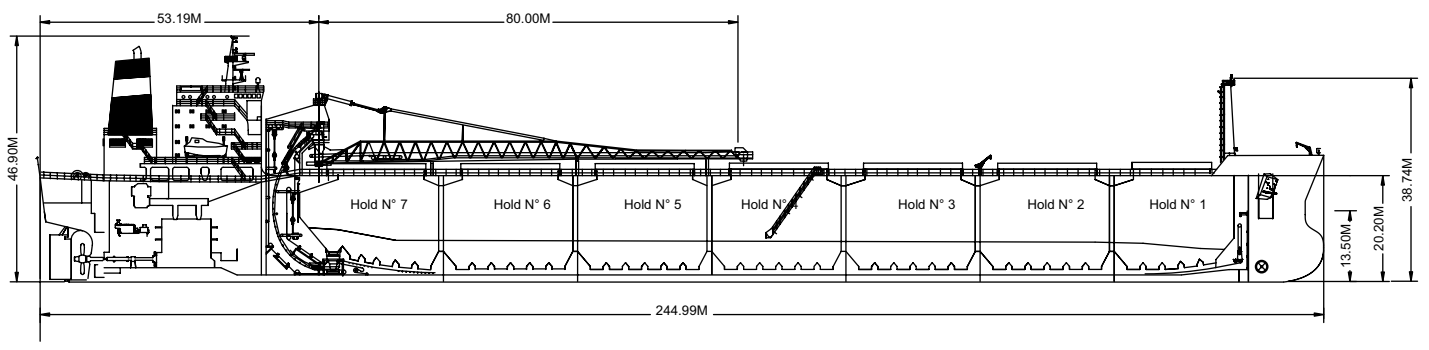
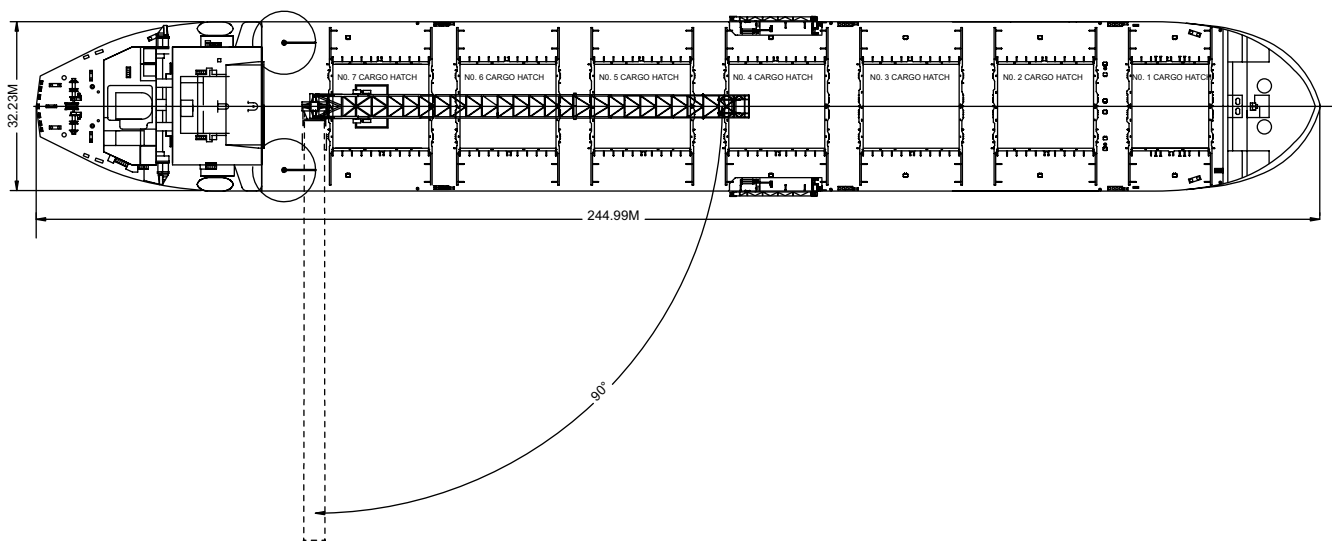
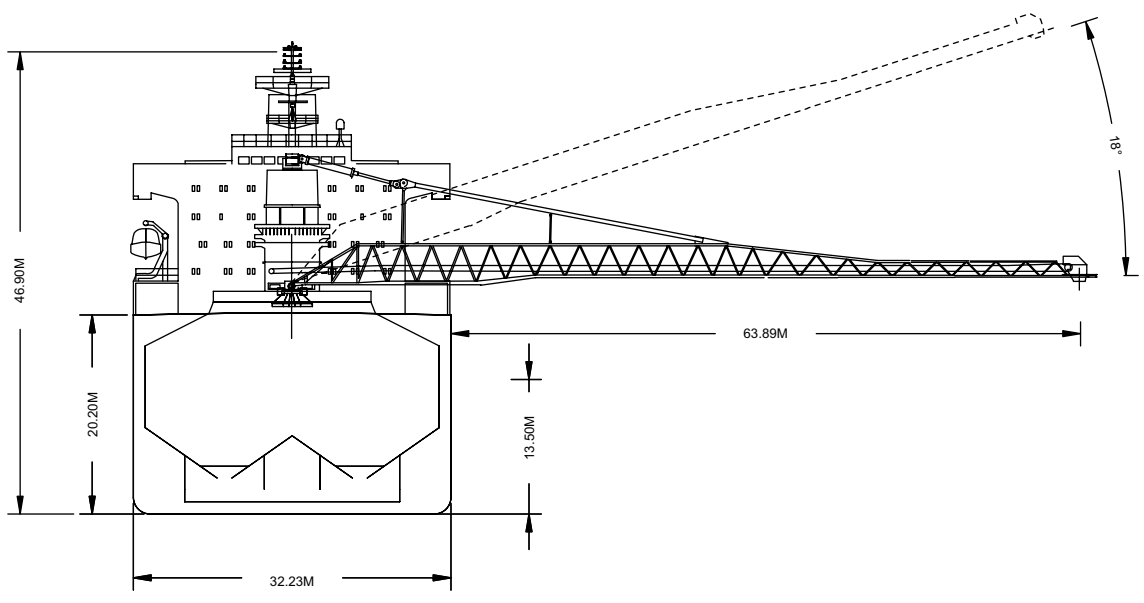




Loading at the Orca Quarry, Vancouver Island.

Built	1982, rebuilt with a new forebody in 2006
Classification	Lloyds+100A1, Bulk Carrier,ESP, Shipright (SDA,FDA,CM)+LMC,UMS	
Length Overall	244.99 metres
Breadth Moulded	32.23 metres
Depth Moulded	20.20 metres
Total Hold Capacity (including structure)	75,243.81 cubic metres
Deadweight	74,517.03 tonnes
Draft	13.50 metres
Gross Tonnage	45,740.00 tonnes
Net Tonnage	17,223.00 tonnes
Bow Thruster	1500.00 kW
Length of Boom	80.00 metres
Discharge Rate (design)	Coal.....	4,200.00 tonnes/hr
	Gypsum.....	4,500.00 tonnes/hr
	Stone.....	5,000.00 tonnes/hr
	Iron Ore.....	6,000.00 tonnes/hr
	Maximum.....	6,000.00 tonnes/hr



0981-04 04/25/06

Air Drafts (metres)												
Draft Condition	Stem	Foremast	Hatches			Cargo Gear	Main Mast		Funnel	Stern	Other Obstruction	Maximum
			Forward	Midship	Aft		Deployed	Lowered				
Keel	24.10	38.74	22.15	22.15	22.15	35.45	46.90	46.40	42.55	19.81	N/A	46.90
Light Ship	23.13	37.50	20.73	19.57	18.39	31.52	42.71	42.21	38.11	15.05	N/A	42.71
Normal Ballast 50% Bunker	16.75	31.33	14.69	14.38	14.07	27.33	38.71	38.21	34.29	11.47	N/A	37.81
Fully Loaded 50% Bunker	10.64	25.28	8.68	8.65	8.62	21.92	33.36	32.86	29.00	6.25	N/A	33.36

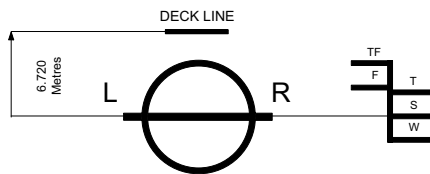
Hatch and Hold Specifications									
Hold Number	1	2	3	4	5	6	7	TOTAL	
Hold Volumes (cubic metres)									
Cubic	8,994.76	11,135.97	11,139.83	11,139.79	11,139.78	11,139.77	10,177.69	74,867.59	
Maximum Grain	9,039.96	11,191.93	11,195.81	11,195.77	11,195.76	11,195.75	10,228.84	75,243.82	
Grain in way of Hatch	45.20	55.96	55.98	55.98	55.98	55.98	51.15	376.23	
Hold Openings (metres)									
Number of Openings	1	1	1	1	1	1	1	7	
Opening Length	14.63	18.29	18.29	18.29	18.29	18.29	16.46		
Opening Width	16.00	16.00	16.00	16.00	16.00	16.00	16.00		
Opening Width (Extra)	17.10	17.10	17.10	17.10	17.10	17.10	17.10		
Coaming Height above Keel	21.50	21.50	21.50	21.50	21.50	21.50	21.50		
Hatch Information (metres)									
Description	Side Rolling Panels	Side Rolling Panels	Side Rolling Panels	Side Rolling Panels	Side Rolling Panels	Side Rolling Panels	Side Rolling Panels	Side Rolling Panels	
Operation	Hydraulic	Hydraulic	Hydraulic	Hydraulic	Hydraulic	Hydraulic	Hydraulic	Hydraulic	
Hatch Length	14.97	18.63	18.63	18.63	18.63	18.63	18.63	16.80	
Hatch Width	16.34	16.34	16.34	16.34	16.34	16.34	16.34	16.34	
Hatch Top Height above Keel	22.15	22.15	22.15	22.15	22.15	22.15	22.15	22.15	

Cargo Handling Equipment
• Fixed type conveyor along boom
• Two 2.6m/s hold conveyors
• Two 2.5m/s transfer conveyors
• One 3.6m/s boom conveyor
• One 4.32m/s 'C' loop conveyor
• Tunnel belts 2.135m wide
• Boom belt 1.981m wide
• Transfer belt 2.135m wide
• All belts have 35 degree trough
• Dust Suppression: Boom and transfer points are filled with positive air pressure dust collectors plus water sprayers on the boom and foam sprayers in the transfers.
• Discharge Rate: Coal4,200 tonnes/hr Ore6,000 tonnes/hr
• Maximum Boom Outreach: 63.89 metres

Consumption (tonnes per day)				
	Speed		Main Engine	Generators
	Loaded	Ballast		
Sea	14.5	15.0	48.0	2.5
Port / Anchorage			N/A	2.5
Loading / Discharge			N/A	2.5 / 7.5

For more information on this ship please visit www.cslint.com





ASSIGNED DRAFTS			
Season	Draft (metre)	Displ. (tonnes)	DWT (tonnes)
TF	14.10	92,880	76,503
F	13.81	90,886	74,509
T	13.78	92,926	76,549
S	13.50	90,894	74,517
W	13.22	88,866	72,489

Light Ship
16,377 tonnes

DEADWEIGHT SCALE									
DRAFT				DISPLACEMENT	TPC	DEADWEIGHT	DRAFT		
Sea Water		Fresh Water					Sea Water	Sea Water	
(metre)	(feet)	(metre)	(feet)	(tonnes)	(tonnes)	(tonnes)			(feet)
17	58		58	120,000					
	56	17	56			100,000	56	17	
16	54		54	110,000					
	52	16	52			90,000	52	16	
15	50		50	100,000					
	48	15	48			80,000	48	15	
14	46		46	90,000					
	44	14	44			70,000	44	14	
13	42		42	80,000	72				
	40	13	40			70,000	42	13	
12	38		38	70,000					
	36	12	36			60,000	38	12	
11	34		34	60,000	70				
	32	11	32			50,000	36	11	
10	30		30	50,000					
	28	10	28			40,000	32	10	
9	26		26	40,000	69				
	24	9	24			30,000	28	9	
8	22		22	30,000					
	20	8	20			20,000	26	8	
7	18		18	20,000	68				
	16	7	16			10,000	24	7	
6	14		14	10,000					
	12	6	12				22	6	
5	10		10	0	67				
	8	5	8				20	5	
4	6		6		66				
		4					18	4	
3					65				
		3					16	3	
2									
		2					14	2	
							12		
							10		
							8		
							6		

0981-04 06/13/06



For more information on this ship please visit www.cslint.com