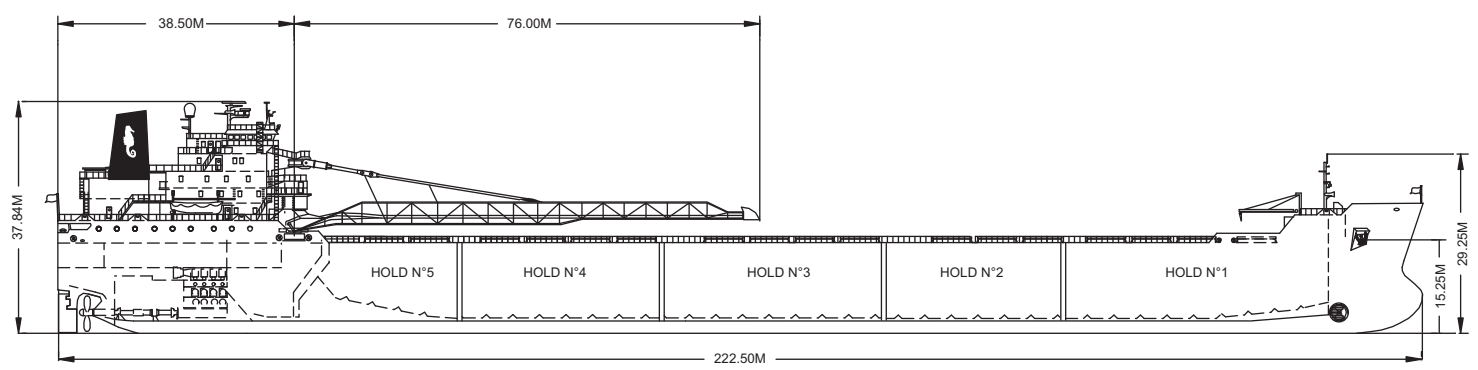
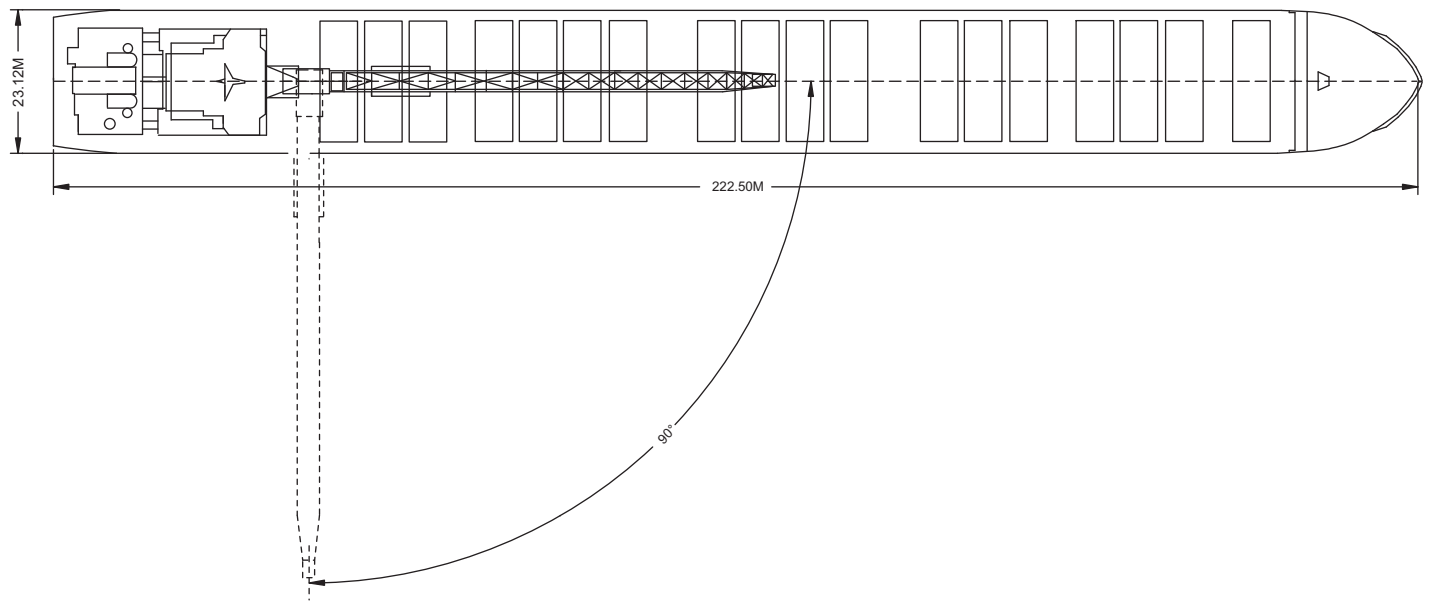
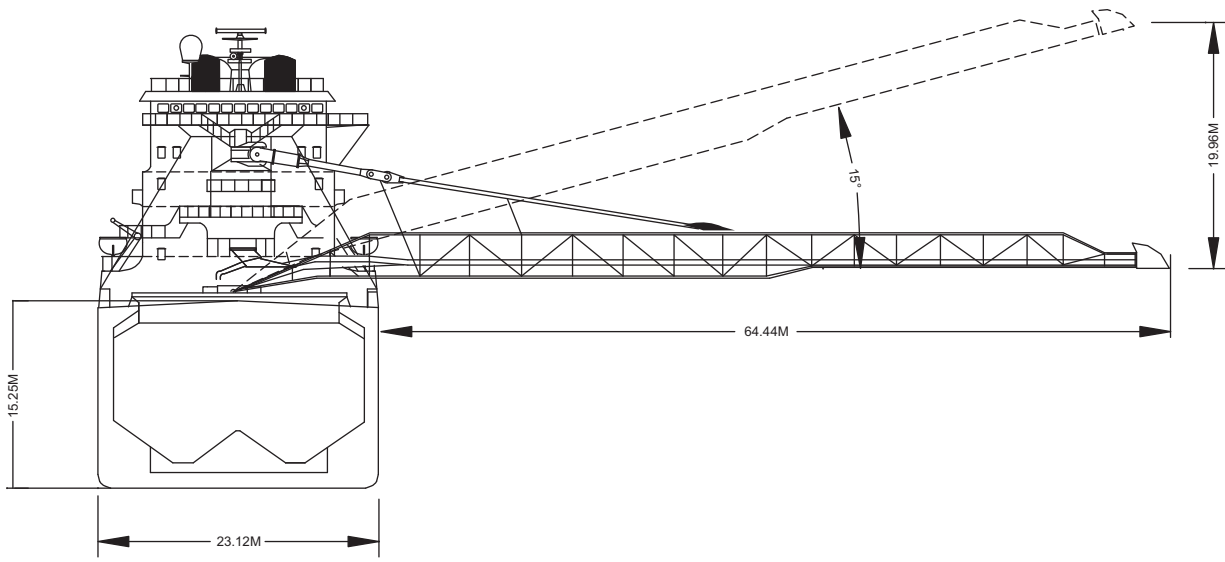




*Discharging into an enclosed hopper,  
at a power station on the Hudson River.*

Built	.....	1983
Classification	.....	Lloyds +100 A1
Length Overall	.....	222.50 metres
Breadth Moulded	.....	23.12 metres
Depth Moulded	.....	15.25 metres
Total Hold Capacity (including hatches)	.....	36,542.00 cubic metres
Deadweight	.....	37,263 tonnes
Draft	.....	10.51 metres
Gross Tonnage	.....	24,094 tonnes
Net Tonnage	.....	10,172 tonnes
Bow Thruster	.....	880 kW
Length of Boom	.....	76.00 metres
Discharge Rate	-Coal .....	2,500 tonnes/hr
	-Ore .....	5,500 tonnes/hr



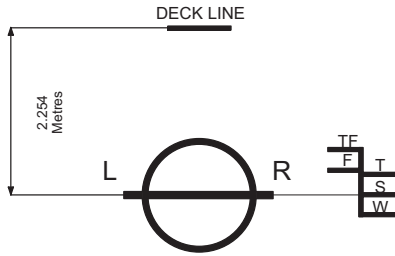
0981-04 12/03/04

<b>Air Drafts</b> <span style="float: right;">(metres)</span>												
Draft Condition	Radio Aerial	Foremast	Hatches			Cargo Gear	Main Mast		Funnel	Stern	Other Obstruction*	Maximum
			Forward	Midship	Aft		Deployed	Lowered				
Keel	43.50	29.55	16.22	16.22	16.22	N/A	37.84	N/A	36.64	18.45	N/A	43.50
Light Ship	39.91	28.22	14.89	13.76	12.63	N/A	33.59	N/A	33.05	14.86	N/A	39.91
Normal Ballast 50% Bunker	36.58	25.90	9.98	9.64	9.30	N/A	30.81	N/A	29.72	11.53	N/A	36.58
Fully Loaded 50% Bunker	33.02	21.82	5.90	5.82	5.74	N/A	27.33	N/A	26.16	7.97	N/A	33.02

<b>Hatch and Hold Specifications</b>									
Hold Number	1	2	3	4	5	6	7	TOTAL	
<b>Hold Volumes (cubic metres)</b>									
Cubic	9,194.0	5,984.0	7,681.0	7,797.0	4,775.0				35,431.0
Maximum Grain	9,441.0	6,169.0	7,928.0	8,044.0	4,960.0				36,542.0
Grain in way of Hatch	247.0	185.0	247.0	247.0	185.0				1,111.0
<b>Hold Openings (metres)</b>									
Number of Openings	4	3	4	4	3				18
Opening Length	6.10	6.10	6.10	6.10	6.10				
Opening Width	16.40	16.40	16.40	16.40	16.40				
Coaming Height above Keel	15.98	15.98	15.98	15.98	15.98				
<b>Hatch Information (metres)</b>									
Description	Pontoon	Pontoon	Pontoon	Pontoon	Pontoon				
Operation									
Hatch Length	6.27	6.27	6.27	6.27	6.27				
Hatch Width	17.77	17.77	17.77	17.77	17.77				
Hatch Top Height above Keel	16.22	16.22	16.22	16.22	16.22				

<b>Cargo Handling Equipment</b>
• Unloading Equipment: Two hold conveyors feeding two cross conveyors, followed by a single loop conveyor and single cargo boom
• Dust Suppression System: Water Spray
• Unloader Boom Length: 76.00 metres
• Discharge Rate - Coal: 2,500 tonnes/hr - Ore: 5,500 tonnes/hr
• Maximum Boom Outreach: 64.44 metres

<b>Consumption (tonnes per day)</b>				
	Speed		Main Engine	Generators
	Loaded	Ballast	IFO	MDO
Sea	13.0	13.5	28	2.8
Port / Anchorage			N/A	2.5
Loading / Discharge			N/A	3.5/8.0



ASSIGNED DRAFTS			
Season	Draft (metre)	Displ. (tonnes)	DWT (tonnes)
TF	10.97	49,277	38,317
F	10.75	48,229	37,269
T	10.73	49,297	38,337
S	10.51	48,223	37,263
W	10.29	47,153	36,193

**Light Ship**  
10,960 tonnes

DEADWEIGHT SCALE									
DRAFT				DISPLACEMENT	TPC	DEADWEIGHT	DRAFT		
Sea Water		Fresh Water					Sea Water	Sea Water	
(metre)	(feet)	(metre)	(feet)	(tonnes)	(tonnes)	(tonnes)	(feet)	(metre)	
	38	12					38		
11	36		38	50,000		40,000	36	11	
		11	36						
10	34		34				34	10	
	32	10	32				32		
9	30		30	40,000		30,000	30	9	
	28	9	28						
8	26		26		48		26	8	
	24	8	24			20,000	24	7	
7	22	7	22	30,000				22	
	20		20				20	6	
6	18	6	18				18		
	16	5	16	20,000	46	10,000	16	5	
5	14		14						14
	12	4	12				12		
4	10		10				10	3	
		3							

0981-04 08/17/04